

FIVE-YEAR CAPITAL PLAN

REBUILDING, EXPANDING AND MAINTAINING OUR FACILITIES



Submitted by
Rudolph F. Crew, Ed.D.
Superintendent of Schools
July 2006

2006
2010

The School Board of Miami–Dade County, Florida

Mr. Agustin J. Barrera, Chair

Ms. Perla Tabares Hantman, Vice-Chair

Mr. Frank J. Bolaños

Ms. Evelyn Langlieb Greer

Dr. Robert B. Ingram

Dr. Martin Karp

Ms. Ana Rivas Logan

Dr. Marta Pérez

Dr. Solomon C. Stinson

FIVE-YEAR CAPITAL PLAN UPDATE
FISCAL YEARS 2006-2010

TABLE OF CONTENTS

| | Page |
|---|------|
| Message from the Superintendent | 1 |
| I. OVERVIEW OF THE 2005-2006 CAPITAL PROGRAM YEAR | 3 |
| A. Capital Program Overview and Project Detail – Regions I Through VI | 3 |
| B. Existing Facilities Projects-Regions I Through VI | 18 |
| II. HIGHLIGHTS OF FIVE-YEAR CAPITAL PLAN FOR FISCAL YEARS 2006-2015 | 29 |
| A. Enrollment | 29 |
| 1. Historical Student Enrollment – 1996-2006 | 29 |
| 2. Narrowing the Overcrowding Gap | 31 |
| 3. Projected Enrollment | 40 |
| B. Summary of Proposed Adjustments to Capacity Projects for Fiscal Years 2006-2010 by Regional Center | 48 |
| C. Projected School Openings-2006 Through 2010 | 51 |
| D. Existing Facilities-New Initiatives | 57 |
| III. 2006-2010 Capital Plan Detail | |

SUPERINTENDENT'S
MESSAGE

Message from the Superintendent

It was only approximately a year ago that this District's first-ever comprehensive Five-Year Capital Plan was approved by the School Board. The Plan's objectives were:

- 1) to relieve overcrowding and meet the class size reduction mandate,
- 2) to bring all existing facilities to a state of good repair, and
- 3) to provide for educational enhancements as required, at existing facilities.

That Plan, which proposed a wide range of projects both in new capacity and improvements to existing facilities and a five-year expenditure effort nearing \$3.7 billion, became the roadmap for all our capital efforts. The 18,000 seats we opened for school year 2005 marked the beginning of a major turn-around in our capital construction program, only to be outshined by the 20,000 seats we project to open for school year 2006; an effort we plan to sustain until overcrowding is eradicated. While much of this new capacity was delivered through additions at existing campuses, over the following four years, we project an additional estimated 82,000 seats will be delivered primarily through the construction of new prototypical schools, which have been designed to reflect the prominence they should hold in the community as significant public buildings, and through the delivery of smaller schools, some in unconventional ways, such as retrofitted leased commercial space in urban areas.

In our zeal to produce new capacity though, we did not overlook our responsibility to improve and renew the existing inventory. In fiscal year 2005-2006 alone, our capital efforts focused on scoping a variety of improvement and renovation projects at over 150 school facilities. These projects have now been commissioned for design and/or awarded for construction, and are an important part of a five-year effort that will continue until all facilities have been upgraded as required. Two noteworthy projects initiated in 05-06, are the restoration of Miami Senior High to its former glory and the wholistic renovation of Miami Central Senior High; both exemplify our commitment to our students, faculty and the community.

Overall for Fiscal Year 2005-2006, the District awarded over \$1 billion in total projects. This accomplishment is unprecedented in the District's history, representing one and a half years' worth of implementation effort in one year's timeframe.

This Plan continues our commitment and keeps us on the steady course of rebuilding, expanding and maintaining our facilities. The proposed expenditure for the next five-year cycle is estimated at \$3.4 billion, approximately \$2.2 billion of which is proposed for new capacity and replacement of physically or functionally obsolete facilities, which will yield upon completion approximately 82,000 student stations, and the balance, or approximately \$1.2 billion for renovations and improvements to existing facilities, as we continue to renew our inventory. It is anticipated that projected capacity needs will have been met by 2010 as reflected in the Plan's drastic reduction in capacity expenditures by year five. The task of renewing and rebuilding our existing inventory will continue well beyond that time period; however, the majority of deficiencies will have been addressed by 2010.

There is no doubt that our role and presence in the community has gained enormous momentum and no longer is public education relegated to the background; the eagerness with which our public partners continue to approach us and their willingness to join with us in the betterment of public education, is a clear indication that we are a key player in a collective effort to establish and maintain an unparalleled quality of life for all of our communities. In the coming months, as we continue on this journey of progress and improvement, it is my intent to start a dialogue about future capital funding needed to keep us moving steadily towards our five-year goal to eradicate overcrowding, eliminate portables, meet the class size mandate, and improve all our existing facilities.

I. OVERVIEW OF THE 2005-2006 CAPITAL PROGRAM YEAR

A. 2005-2006 Capital Program Overview and Project Detail - Regions I through VI

Fiscal Year 2005-2006 saw more activity in terms of project scoping, commissioning of design professionals and construction awards, than the past five (5) years of school construction combined. The summary table below illustrates accomplishments for 2005-2006 v. original targets, and the tables that follow provide the back-up detail including projects planned in 2005-2006 and accomplished, projects advanced from future years, projects funded in prior years and awarded, and projects or project scope deferred or modified and the reasoning behind it.

Table 1. Summary of 05-06 Targets v. Accomplishments

| OBJECTIVE | 2005-2006 TARGET | 2005-2006 ACCOMPLISHMENT |
|----------------------------|-------------------------------------|-------------------------------------|
| Awards | \$600 Million | \$855 Million |
| School Openings | 19,000 Student Stations | 20,476 Student Stations |
| New Capacity | 55 Projects/46,724 Student Stations | 69 Projects/67,070 Student Stations |
| Existing Facilities | 178 Projects | 289 Projects |

Table 2. Detail of 05-06 Capacity Projects Planned and Accomplished

| PROJECT | REG. | SEATS | STATUS | AWARDS | OCCUPANCY |
|--|------|-------|-----------------------------------|---------------|-----------|
| New Modular - Palm Lakes ES | I | 506 | Construction | \$ 7,711,764 | 2006 |
| New Modular - Miami Lakes ES | I | 738 | Phase I: site Phase II: design | \$ 713,579 | 2007 |
| New Modular - North County ES | I | 176 | Construction | \$ 4,642,730 | 2006 |
| New Modular - E. R. Graham ES | I | 502 | Construction | \$ 8,459,296 | 2006 |
| New Modular - Palm Springs ES | I | 308 | Construction | \$ 5,198,669 | 2006 |
| New Modular @ Mae Walters El. - Mae Walters ES / Meadowlane ES | I | 366 | Design | \$ 432,956 | 2007 |
| S/S "U1" - Joella Good ES / Palm Springs North ES | I | 1239 | Construction | \$ 29,538,426 | 2007 |

| PROJECT | REG. | SEATS | STATUS | AWARDS | OCCUPANCY |
|---|------|-------|-----------------------------------|---------------|-----------|
| S/S "V1" - E. R. Graham ES / B. Sheppard ES | I | 1239 | Construction | \$ 24,823,426 | 2007 |
| Early Child Center - Joella Good ES / Charles Wyche ES | I | 396 | Construction | \$ 18,028,330 | 2007 |
| S/S "LLL" - Carol City SHS / American SHS Phase I | I | 3640 | Scoping | \$ 500,000 | 2009 |
| New Modular - Treasure Is El. | II | 551 | Scoping | \$ 377,640 | 2007 |
| New Modular - Scott Lake ES | II | 220 | Construction | \$ 4,141,948 | 2006 |
| New Modular - Hibiscus ES | II | 176 | Construction | \$ 4,132,994 | 2006 |
| Bay Harbor K-8 Conversion - Highland Oaks MS | II | 551 | Campus Master Planning (in-house) | \$ - | 2008 |
| Leased Space - VB Highland Oaks MS / | II | 674 | Construction | \$ 9,266,000 | 2006 |
| S/S BB1 K8 - RB Bay Harbor ES / / VB Highland Oaks MS | II | 1624 | Site acquisition and design | \$ 11,800,000 | 2008 |
| MLC @ Madie Ives - Highland Oaks MS | II | 948 | Design | \$ 2,003,753 | 2008 |
| S/S BBB-1 North Miami Sr. Replacement - North Miami SHS | II | 3661 | Design | \$ 2,370,905 | 2009 |
| New Modular - Miami Springs MS | III | 484 | Design | \$ 246,873 | 2007 |
| New Modular - Rockway MS | III | 676 | Construction | \$ 12,090,000 | 2006 |

| PROJECT | REG. | SEATS | STATUS | AWARDS | OCCUPANCY |
|--|------|-------|---------------------------|---------------|-----------|
| S/S HH1 New K-8 - JI Smith ES / EB Thomas / ES / Doral MS | III | 2120 | Site acquisition | \$ 6,000,000 | 2008 |
| S/S P1(WW1) New Elementary - JI Smith ES / EB Thomas | III | 1221 | Site acquisition | \$ 5,000,000 | 2008 |
| S/S GGG-1New Senior - Doral SHS / Miami Coral / Park SHS / Braddock SHS - site acquisition | III | 2000 | Site acquisition | \$ 12,000,000 | 2010 |
| Holmes EI Partial Replacement - | III | 573 | Demolition & Construction | \$ 800,000 | 2007 |
| Liberty City EI Partial Replacement | III | 300 | Scoping | \$ 31,543 | 2008 |
| New Modular - Henry Flagler ES | IV | 505 | Construction | \$ 6,970,217 | 2006 |
| New Modular - Citrus Grove MS | IV | 711 | Construction | \$ 11,661,776 | 2006 |
| New Modular - Kensington Park ES | IV | 524 | Construction | \$ 6,550,141 | 2006 |
| Ponce de Leon Middle - Restoration/Renovations | IV | 264 | Construction | \$ 10,189,356 | 2007 |
| English Center - English Center / Adult Ed | IV | 600 | Scoping (in-house) | \$ 3,500 | 2007 |
| New Modular - Coral Terrace ES | V | 204 | Construction | \$ 3,971,308 | 2006 |
| New Modular - Pinecrest ES | V | 480 | Construction | \$ 7,169,500 | 2006 |
| New Modular - Miami Palmetto SHS | V | 600 | Construction | \$ 11,135,654 | 2006 |
| New Modular - Coral Reef SHS | V | 600 | Construction | \$ 9,087,156 | 2006 |

| PROJECT | REG. | SEATS | STATUS | AWARDS | OCCUPANCY |
|--|------|--------------|------------------|-----------------------|-----------|
| Early Child Center - MS Douglas ES | V | 396 | Construction | \$ 9,928,330 | 2007 |
| Early Child Center - Jane Roberts K8 /Ashe ES | V | 306 | Design | \$ 328,330 | 2007 |
| Devon Aire EI K-8 Conversion - Arvida MS | V | 783 | Design | \$ 796,220 | 2007 |
| John A Ferguson Sr - John A Ferguson SHS / G. Holmes Braddock SHS | V | 850 | Construction | \$ 12,806,866 | 2006 |
| New Modular - Perrine ES | V | 220 | Construction | \$ 2,400,000 | 2006 |
| New Modular - Howard Drive ES | V | 204 | Construction | \$ 2,397,000 | 2006 |
| JRL Lee Relocation - Alternative Education | V | 325 | Scoping | \$ 15,798 | 2009 |
| New Modular - Centennial MS | VI | 770 | Construction | \$ 14,714,205 | 2006 |
| Winston K8 Conversion - Winston Park | VI | 617 | Construction | \$ 17,164,125 | 2006 |
| New EI (S/s A1) - Chapman / Naranja / / Redland ES | VI | 826 | Construction | \$ 23,911,572 | 2007 |
| S/S M1 New EI - C Eve / Hoover / / Kendall Lakes ES- site acquisition | VI | 826 | Site acquisition | \$ 5,000,000 | 2008 |
| S/S HHH-1 New Senior - Felix Varela / Sunset / / Miami Southridge SHS - site acquisition | VI | 2858 | Site acquisition | \$ 6,000,000 | 2010 |
| Sub-Total (Planned and Accomplished) | | 38358 | | \$ 332,511,886 | |

Table 3. Projects Planned in Future Years and Advanced to 05-06

| PROJECT | REG. | SEATS | STATUS | AWARDS | OCCUPANCY |
|--|------|-------|-----------------|---------------|-----------|
| S/S D K-8 - VB Highland Oaks ES & MS, Madie Ives ES | II | 1642 | Construction | \$ 41,104,105 | 2008 |
| S/S E-1 New El and New Mid - Biscayne Gardens ES / North Miami ES / Oak Grove ES/North Miami Mid | II | 2000 | Design | \$ 1,888,000 | 2008 |
| S/S QQQ1 New Senior - Krop SHS/ N Miami Beach SHS | II | 1593 | Design | \$ 2,759,247 | 2008 |
| New Modular - John I Smith ES | III | 352 | Construction | \$ 6,362,299 | 2006 |
| Miami Senior Addition - Miami Senior | IV | 1000 | Master Planning | \$ 304,638 | |
| Young Women's Academy | IV | 450 | Construction | \$ 5,700,000 | 2006 |
| South Miami ES - K-8 Conversion | V | 550 | Construction | \$ 22,058,000 | 2006 |

| PROJECT | REG. | SEATS | STATUS | AWARDS | OCCUPANCY |
|--|------|--------------|--------------------------|-----------------------|-----------|
| New Senior - Miami Palmetto SHS / Miami Killian SHS | V | 1600 | Master Plan/Scoping | \$ 35,380 | 2010 |
| S/S JJ-1 New Middle - Southwood MS / Palmetto MS | V | 1241 | Site Planning/ Design | \$ - | 2009 |
| New Middle - Glades/ Arvida Mid/Kenwood K-8 | V | 1241 | Scoping | \$ 32,390 | 2009 |
| New K8 S/S DD1 - Leisure City K8 / Peskoe / Chapman | VI | 1642 | Construction | \$ 39,065,634 | 2008 |
| New K8 @ Palm Glade (S/S CC1) - Pine Villa / Redland ES / Redland MS | VI | 1642 | Construction | \$ 36,111,279 | 2008 |
| Sub-Total (Advanced) | | 14953 | | \$ 155,420,972 | |
| GRAND TOTAL (Planned and Advanced) | | 53311 | | \$487,932,858 | |

Table 4. Projects Funded in Prior Years and Awarded in 05-06

| PROJECT | REG. | SEATS | STATUS | AWARDS | OCCUPANCY |
|--|------|-------|--------------|---------------|-----------|
| Miami Central Sr Renovations - Miami Central SHS | III | NA | Construction | \$ 3,500,000 | |
| S/S "JJJ" Goleman Relief | I | 2844 | Construction | \$ 12,111,268 | 2008 |
| S/S WWW Miami Springs Relief | I | 1964 | Construction | \$ 66,737,095 | 2008 |
| New Modular - JFK Middle | II | 466 | Construction | \$ 11,326,437 | 2006 |
| Ojus ES Addition | II | 538 | Construction | \$ 12,185,420 | 2007 |
| New Modular - South Hialeah EI | III | 636 | Construction | \$ 23,108,134 | 2006 |
| Miami Jackson Sr replacement | IV | 2565 | Construction | \$ 72,262,019 | 2008 |
| New Modular - Shenandoah EI | IV | 437 | Construction | \$ 13,234,841 | 2006 |

| PROJECT | REG. | SEATS | STATUS | AWARDS | OCCUPANCY |
|--|------|--------------|--------------|-----------------------|-----------|
| New Modular - Coral Reef E1 | V | 440 | Construction | \$ 6,849,596 | 2006 |
| Frank C. Martin K-8 Conversion | V | 675 | Construction | \$ 15,261,927 | 2007 |
| South Dade Sr replacement | VI | 3641 | Construction | \$ 98,105,523 | 2009 |
| Total Prior Years' Projects Awarded in FY 05-06 | | 14206 | | \$ 334,682,260 | |

Table 5. 05-06 Projects Deferred or Modified

| |
|--|
| <p>The possible relocation of Miami MacArthur North Senior High School (approximately 300 seats) and its co-location with a new Building Trades Senior High School (approximately 500 seats), is pending a collaborative effort with the City of Hialeah. This collaboration would entail the joint development and use of a recreational complex. A preliminary proposal has been presented to the City and is under review.</p> |
| <p>A proposed collaboration between the District and Florida Memorial University for the construction of a multi-academy senior high school (approximately 750 seats) adjacent to Jann Mann and the North Center Transportation Center depends on the District's ability to secure property from Miami-Dade County and/or the Opa Locka Community Development Corporation for the relocation of the North Center Transportation Center. Exploration of options is underway with both entities.</p> |
| <p>Stable current and projected enrollment at Miami Springs, Springview and South Hialeah Elementary Schools, coupled with a large addition at South Hialeah Elementary, do not require that a full new school be built; instead, two small additions will be added to the 2006-2010 capital plan, at Miami Springs and Springview Elementary schools to meet class size needs.</p> |
| <p>Construction of a new facility at the current site of the English Center first requires the relocation of the English Center (EC) facility. A new location for the EC on a board-owned site has been identified and a replacement facility is currently being scoped along with the possible reuse of the three-story modular prototype from a 2007 opening. In the interim, commissioning of A/E for reuse of a K-8 prototype on the current EC site is anticipated for July 06.</p> |
| <p>Commissioning of an A/E with expertise in historic work was critical for the restoration and expansion of Southside Elementary; commissioning of an A/E is anticipated for the School Board meeting of August 06.</p> |
| <p>Stable current and projected enrollment at Shenandoah, Citrus Grove and Riverside Elementary schools, coupled with recent additions at two of these schools, do not now require that a full new school be built; instead, adjustments to attendance boundaries may be considered as needed to balance enrollment. Future enrollment will be carefully monitored on an annual basis.</p> |
| <p>Stable current and projected enrollment at Fairlawn, Kinloch and Auburndale Elementary schools, coupled with recent additions at two of these schools, do not now require that a full new school be built; instead, adjustments to attendance boundaries may be considered as needed to balance enrollment. Future enrollment will be carefully monitored on an annual basis.</p> |
| <p>Possible co-location of new Building Trades Senior High School with the relocation of Miami MacArthur North Senior High School, is pending a collaborative effort with the City of Hialeah. This collaboration would entail the joint development and use of a recreational complex. A preliminary proposal has been presented to the City and is under review.</p> |
| <p>State School TTT, a new senior high school at the former Homestead Air Force Base, will be co-located on the same campus as State School DD1, a new K-8 center, which was awarded at the May 06 board meeting. A master plan for the site has been developed and commissioning of an A/E for this senior high school is anticipated for August 06.</p> |

As can be seen from the summary charts above, FY 05-06 was a banner year for the Office of School Facilities. In total, the department awarded over \$820 million in new capacity projects alone representing over 67,000 new student seats in either design or construction; of these projects, nine construction awards, three Early Childhood Centers, three Elementary schools and three K-8 Centers are based on prototypes researched and developed over the course of this year. Development of each of the four prototypes was carried out with three main goals in mind:

1. to create adaptable school buildings that can “expand” or “contract” based on need and site configuration or size,
2. to create school buildings that project the importance of the activities conducted within and tell the community the learning environment is of paramount importance to the learning process, and
3. to create quality school buildings that can withstand the test of time through careful material selection and design considerations.

An illustration of each of the four (4) prototypes follows.

early childhood center

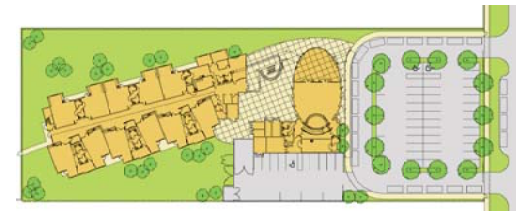
site plans



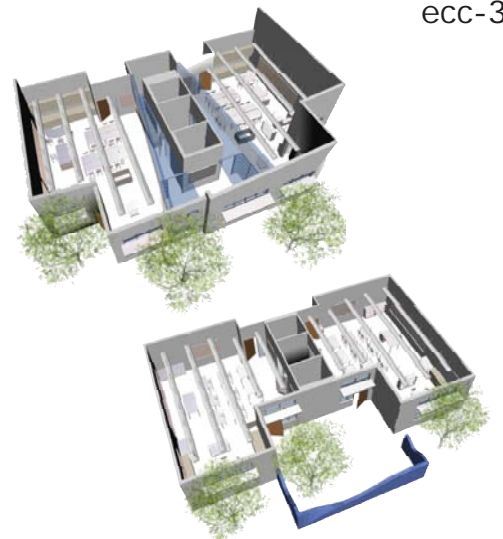
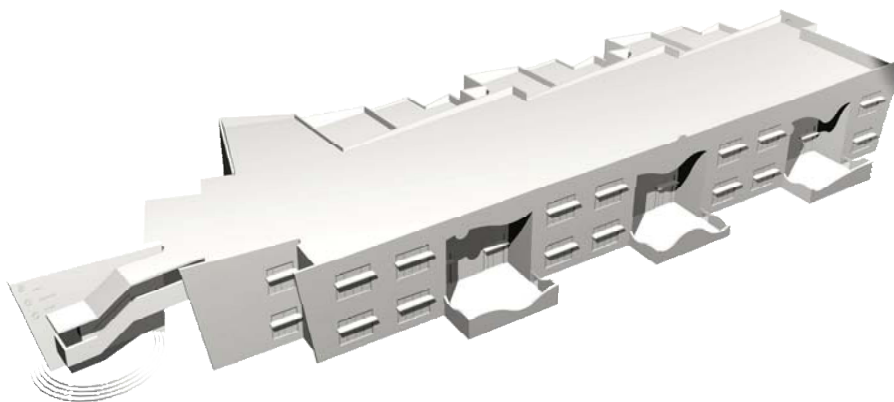
ecc-1



ecc-2



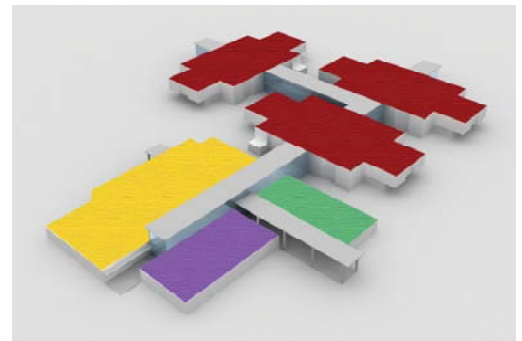
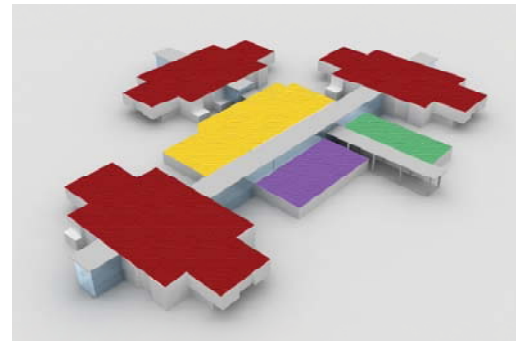
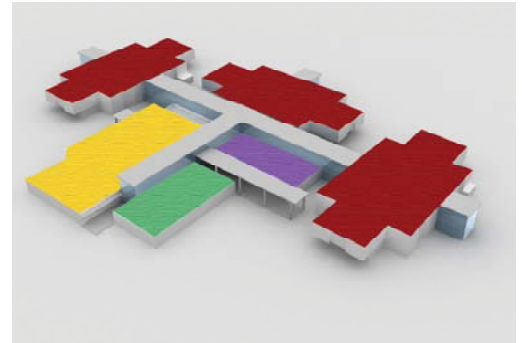
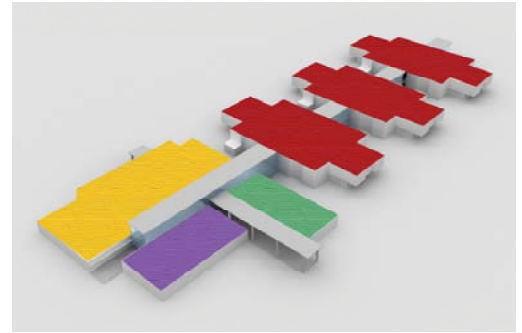
ecc-3



400 student station early childhood center

elementary school

site plans



1200 student station elementary school

K-8 school

site plans



state school d-1



state school cc-1



1200-1600 student station K-8 school



state school dd-1

middle school

site plans



state school mm

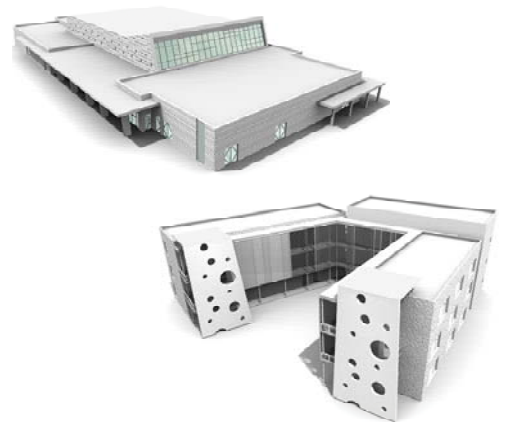


state school pp



state school uu

1200-1600 student station middle school



B. Existing Facilities Projects - Regions I through VI

As was the case with new capacity projects, in Fiscal Year 2005-2006, for the first time in its history, the District had an opportunity to positively impact almost half of all existing facilities, through a myriad of renovation and improvement projects, above and beyond routine maintenance carried out by the Department of Maintenance Operations as part of the school based maintenance plans. In FY 05-06, the Office of School Facilities successfully scoped improvement projects at over 150 facilities across the District, all of which are now either in design or construction. The success of this concentrated effort was due largely to the District's ability to use a variety of professional resources, both in-house and outsourced. The tables below provide additional detail on the status of FY 05-06 projects, including projects or project scope advanced from future years, and projects funded in prior years but awarded in FY 05-06.

Table 6. 05-06 Projects Planned and Accomplished

| PROJECT | STATUS | AWARDS |
|----------------------------------|--------------|-------------|
| Cope North Alternative Education | Design | \$15,417 |
| Corporate Academy North | Design | \$126,558 |
| Dorothy M. Wallace - Cope South | Design | \$56,182 |
| JRE Lee Educational Center | Construction | \$15,798 |
| Juvenile Justice Center | Design | \$31,167 |
| Merrick Educational Center | Construction | \$1,991,739 |
| Neva King Cooper Education | Construction | \$314,911 |
| Stores And Distribution Center | Design | \$15,750 |
| Nathaniel "Traz" Powel Fo | Construction | \$1,095,000 |
| Security Improvements | Construction | \$8,225,583 |
| Underground Storage Tank Removal | Construction | \$1,539,638 |
| M&O Center & North (Toys) | Construction | \$1,354,473 |
| M&O South Central | Design | \$15,960 |

| PROJECT | STATUS | AWARDS |
|-----------------------|--------------|-------------|
| Amelia Earhart ES | Design | \$167,597 |
| American SHS | Design | \$1,010,443 |
| Barbara Goleman SHS | Construction | \$1,473,540 |
| Barbara Hawkins ES | Construction | \$388,612 |
| Ben Sheppard ES | Construction | \$15,500 |
| Brentwood ES | Construction | \$268,720 |
| Bunche Park ES | Design | \$468,258 |
| Carol City ES | Design | \$204,515 |
| Carol City MS | Construction | \$914,155 |
| Ernest R Graham ES | Design | \$15,500 |
| Flamingo ES | Design | \$433,211 |
| Golden Glades ES | Design | \$32,800 |
| Henry H. Filer MS | Construction | \$2,009,599 |
| Hialeah Gardens ES | Construction | \$36,850 |
| Hialeah MS | Design | \$1,071 |
| J.W. Johnson ES | Construction | \$143,613 |
| James H. Bright ES | Design | \$11,842 |
| John G. Dupuis ES | Construction | \$97,696 |
| Jose Marti MS | Construction | \$132,673 |
| Mae Walters ES | Construction | \$452,161 |
| Meadowlane ES | Construction | \$20,500 |
| Miami Carol City SHS | Completed | \$78,479 |
| Miami Gardens ES | Design | \$107,816 |
| Nathan Young ES | Design | \$415,154 |
| North Dade MS | Design | \$15,500 |
| North Glade ES | Design | \$15,500 |
| North Hialeah ES | Design | \$1,725,703 |
| North Twin Lakes ES | Scoping | \$0 |
| Palm Springs MS | Construction | \$1,067,501 |
| Palm Springs North ES | Construction | \$15,500 |

| PROJECT | STATUS | AWARDS |
|--------------------------------|--------------|--------------|
| Rainbow Park ES | Construction | \$607,000 |
| Skyway ES | Design | \$927,571 |
| Twin Lakes ES | Construction | \$1,118,486 |
| Biscayne ES | Construction | \$162,257 |
| Biscayne Gardens ES | Design | \$187,100 |
| Crestview ES | Design | \$369,837 |
| Fienberg/Fisher ES | Construction | \$10,710,863 |
| Fulford ES | Construction | \$528,419 |
| Gertrude Edelman/Sabal Palm ES | Construction | \$667,195 |
| Gratigny ES | Design | \$118,835 |
| Greynolds Park ES | Design | \$201,015 |
| Hibiscus ES | Design | \$521,355 |
| Highland Oaks MS | Scoping | \$621,039 |
| Linda Lentin ES | Construction | \$324,092 |
| Miami Norland SHS | Design | \$77,904 |
| Michael M. Krop SHS | Construction | \$912,505 |
| Norland ES | Design | \$304,449 |
| Norland MS | Design | \$1,453,937 |
| North Beach ES | Design | \$292,843 |
| North Miami ES | Design | \$15,500 |
| Norwood ES | Construction | \$251,907 |
| Ojus ES | Construction | \$2,968,878 |
| Parkway ES | Construction | \$902,346 |

| PROJECT | STATUS | AWARDS |
|--|--------------|-------------|
| Scott Lake ES | Construction | \$63,828 |
| South Pointe ES | Design | \$15,500 |
| Thomas Jefferson MS | Construction | \$299,613 |
| W.J. Bryan ES | Construction | \$6,645,816 |
| Arcola Lake ES | Construction | \$382,547 |
| Broadmoor ES | Design | \$208,498 |
| Carrie P. Meek/Westview ES | Construction | \$281,356 |
| Charles R. Drew MS | Construction | \$94,242 |
| Coral Park ES | Construction | \$15,000 |
| D A Dorsey Educational Center | Design | \$267,943 |
| Design & Architecture SHS | Design | \$61,152 |
| Dr. Henry W. Mack/West Little River ES | Design | \$513,636 |
| E.W.F. Stirrup ES | Design | \$40,928 |
| E.W.F. Stirrup ES | Design | \$21,267 |
| Earlington Heights ES | Design | \$14,573 |
| Everglades K-8 Center | Design | \$32,398 |
| Hialeah ES | Design | \$5,916 |
| Hialeah ES | Design | \$15,417 |
| Lakeview ES | Design | \$25,415 |
| Lorah Park ES | Construction | \$275,000 |
| Madison MS | Design | \$25,415 |
| Martin Luther King ES | Design | \$29,152 |
| Miami Coral Park SHS | Construction | \$6,408,044 |
| Miami Park ES | Design | \$401,326 |
| Miami Springs MS | Design | \$32,575 |
| Miami Springs SHS | Construction | \$378,010 |
| Rockway MS | Construction | \$501,774 |

| PROJECT | STATUS | AWARDS |
|-------------------------------|--------------|-------------|
| Sweetwater ES | Design | \$55,372 |
| Allapattah MS | Construction | \$1,485,616 |
| Citrus Grove ES | Design | \$53,618 |
| Coral Gables ES | Design | \$29,702 |
| Coral Gables SHS | Design | \$35,872 |
| Coral Way ES | Construction | \$15,455 |
| Eneida Massas Hartner ES | Construction | \$513,569 |
| Frederick Douglass ES | Construction | \$462,052 |
| Kinloch Park ES | Design | \$21,267 |
| Lindsey Hopkins Technical | Design | \$191,240 |
| Little River ES | Design | \$48,327 |
| Maritime & Science Technology | Design | \$228,994 |
| Miami SHS | Master Plan | \$304,637 |
| Morningside ES | Design | \$25,445 |
| Paul Laurence Dunbar ES | Design | \$51,971 |
| Phyllis Ruth Miller ES | Design | \$15,417 |
| Riverside ES | Construction | \$15,427 |
| Santa Clara ES | Design | \$20,417 |
| Shenandoah MS | Design | \$107,662 |
| Silver Bluff ES | Design | \$19,000 |
| Sunset ES | Design | \$77,164 |
| Thena C. Crowder ES | Design | \$25,455 |
| Toussaint L'Ouverture ES | Design | \$25,455 |
| West Laboratory ES | Design | \$31,697 |
| Arvida MS | Construction | \$15,500 |
| Bent Tree ES | Construction | \$267,394 |
| Colonial Drive ES | Construction | \$56,555 |
| Coral Terrace ES | Design | \$29,654 |
| Devon Aire ES | Design | \$796,220 |
| Dr. Bowman Foster Ashe ES | Construction | \$26,100 |
| Ethel Koger Beckham ES | Construction | \$599,606 |
| Greenglade ES | Construction | \$362,199 |

| PROJECT | STATUS | AWARDS |
|-----------------------------|--------------|-------------|
| Howard A. Doolin MS | Construction | \$35,660 |
| Jane Roberts K-8 Center | Design | \$109,815 |
| Leewood ES | Construction | \$370,114 |
| Ludlam ES | Construction | \$136,288 |
| Marjory Stoneman Douglas ES | Design | \$58,290 |
| Miami Killian SHS | Design | \$25,730 |
| Miami Palmetto SHS | Design | \$570,450 |
| Olympia Heights ES | Design | \$49,666 |
| Palmetto ES | Construction | \$45,475 |
| Palmetto MS | Construction | \$461,489 |
| Paul W. Bell MS | Design | \$127,086 |
| Perrine ES | Construction | \$2,391,077 |
| Robert Russa Moton ES | Construction | \$475,644 |
| Royal Green ES | Construction | \$21,600 |
| Snapper Creek ES | Construction | \$390,745 |
| Southwood MS | Construction | \$22,910 |
| Sylvania Heights ES | Construction | \$355,730 |
| Tropical ES | Design | \$87,244 |
| Vineland ES | Construction | \$362,795 |
| W. R. Thomas MS | Construction | \$680,067 |
| Wesley Matthews ES | Construction | \$578,645 |
| West Miami MS | Design | \$20,750 |
| Zora Neale Hurston ES | Design | \$194,941 |
| Air Base ES | Construction | \$360,473 |
| Bel-Aire ES | Construction | \$538,480 |
| Campbell Drive ES | Construction | \$485,150 |
| Caribbean ES | Design | \$62,425 |
| Centennial MS | Design | \$90,473 |
| Coral Reef SHS | Construction | \$891,378 |
| Cutler Ridge MS | Design | \$201,553 |
| Gulfstream ES | Construction | \$210,452 |
| Hammocks MS | Design | \$15,750 |

| PROJECT | STATUS | AWARDS |
|---|---------------|---------------------|
| Herbert A. Ammons MS | Construction | \$184,898 |
| Homestead MS | Construction | \$262,493 |
| Jack D. Gordon ES | Construction | \$638,114 |
| Laura C. Saunders ES | Design | \$347,945 |
| Miami Heights ES | Construction | \$464,032 |
| Miami Southridge SHS | Design | \$160,176 |
| Miami Sunset SHS | Design | \$460,680 |
| Pine Villa ES | Construction | \$385,031 |
| Redland ES | Construction | \$21,330 |
| Redland MS | Design | \$15,750 |
| Redondo ES | Construction | \$397,697 |
| Richmond Heights MS | Construction | \$82,086 |
| Robert Morgan Educational Center | Design | \$380,473 |
| South Dade Skill Center | Design | \$92,784 |
| South Miami Heights ES | Construction | \$413,763 |
| Whispering Pines ES | Construction | \$572,199 |
| William A. Chapman ES | Construction | \$248,503 |
| Transportation Center South | Construction | \$40,065 |
| Region Center V | Construction | \$222,080 |
| SBAB - Main Building | Construction | \$759,485 |
| Total (Planned and Accomplished) | | \$90,431,848 |

Table 7. Projects Planned in Future Years and Advanced to 05-06

| PROJECT | STATUS | AWARDS |
|-------------------------|--------------|---------------------|
| North County ES | Construction | \$1,158,430 |
| Palm Lakes ES | Construction | \$2,386,580 |
| John F. Kennedy MS | Construction | \$4,805,575 |
| Citrus Grove MS | Construction | \$2,118,694 |
| Henry M. Flagler ES | Construction | \$4,239,389 |
| Kensington Park ES | Construction | \$6,286,088 |
| Shenandoah ES | Construction | \$6,441,837 |
| Howard Drive ES | Construction | \$2,369,766 |
| Pinecrest ES | Construction | \$5,900,132 |
| Total (Advanced) | | \$35,706,491 |

Table 8. Projects Funded in Prior Years and Awarded in 05-06

| PROJECT | STATUS | AWARDS |
|-------------------------------|--------------|--------------|
| Student Services & Attendance | Construction | \$121,000 |
| Hialeah Gardens ES | Construction | \$177,394 |
| Parkview ES | Construction | \$585,257 |
| South Hialeah ES | Construction | \$1,040,004 |
| Van E. Blanton ES | Construction | \$213,412 |
| Neva King Cooper Education | Construction | \$310,314 |
| Lenora B. Smith ES | Construction | \$238,474 |
| G.W. Carver MS | Construction | \$658,732 |
| Miami Carol City SHS | Construction | \$2,013,744 |
| Central West Transportation | Construction | \$12,184,120 |
| Bunche Park ES | Construction | \$264,507 |
| G. Edelman/Sabal Palm ES | Construction | \$700,382 |
| Martin Luther king ES | Construction | \$85,539 |
| Region Center IV | Construction | \$245,476 |
| Vineland ES | Construction | \$485,476 |
| Hialeah-Miami Lakes SHS | Construction | \$1,614,478 |
| Felix Varela SHS | Construction | \$204,000 |
| Amelia Earhart/Hialeah MS | Construction | \$643,527 |
| Irving & Beatrice Peskoe ES | Construction | \$433,125 |

| PROJECT | STATUS | AWARDS |
|--------------------------------|--------------|-------------|
| Mays MS | Construction | \$544,347 |
| Dr. Edward L. Whigham ES | Construction | \$625,000 |
| Miami Springs MS | Construction | \$1,107,625 |
| Robert Renick Education Center | Construction | \$332,215 |
| Campbell Drive MS | Construction | \$625,000 |
| Lake Stevens MS | Construction | \$807,077 |
| American SHS | Construction | \$646,695 |
| Hialeah MS | Construction | \$567,476 |
| Crestview ES | Construction | \$625,000 |
| Thomas Jefferson MS | Construction | \$115,444 |
| Auburndale ES | Construction | \$620,000 |
| Ponce de Leon | Construction | \$350,000 |
| Howard A. Doolin MS | Construction | \$253,000 |
| Ruth Owens Kruse Education | Construction | \$700,000 |
| Southwest Miami SHS | Construction | \$104,244 |
| Gulfstream ES | Construction | \$774,000 |
| Biscayne Nature Center | Construction | \$50,000 |
| Fienberg/Fisher ES | Construction | \$578,793 |
| Highland Oaks MS | Construction | \$4,445,000 |
| Natural Bridge ES | Construction | \$404,917 |
| North Miami ES | Construction | \$334,289 |
| Norwood ES | Construction | \$580,000 |
| Oak Grove ES | Construction | \$206,400 |
| Parkway MS | Construction | \$338,000 |
| W.J. Bryan ES | Construction | \$220,000 |
| Norland ES | Construction | \$750,000 |
| Allapattah MS | Construction | \$905,000 |
| Jose Marti MS | Construction | \$573,000 |
| Howard D. McMillan MS | Construction | \$1,779,562 |
| Whispering Pines ES | Construction | \$165,000 |
| M.A. Milam K8 | Construction | \$460,161 |
| Coral Park ES | Construction | \$544,000 |
| Miami Shores ES | Construction | \$141,110 |
| Coral Gables SHS | Construction | \$100,000 |

| PROJECT | STATUS | AWARDS |
|-----------------------------------|--------------|-------------|
| Carol City MS | Construction | \$342,500 |
| Parkview ES | Construction | \$871,043 |
| Bunche Park ES | Construction | \$300,000 |
| Hialeah SHS | Construction | \$115,400 |
| Oak Grove ES | Construction | \$249,999 |
| Coral Park ES | Construction | \$195,502 |
| Earlington Heights ES | Construction | \$310,000 |
| Amelia Earhart/Hialeah MS | Construction | \$1,254,129 |
| Henry W. Flagler MS | Construction | \$194,176 |
| Cypress ES | Construction | \$270,933 |
| Hibiscus ES | Construction | \$347,012 |
| Key Biscayne ES | Construction | \$185,000 |
| Miami SHS | Construction | \$320,334 |
| William H Turner Technical | Construction | \$996,977 |
| Bunche Park ES | Construction | \$406,372 |
| Palmetto MS | Construction | \$170,000 |
| Virginia A Boone/Highland Oaks ES | Construction | \$127,000 |
| Myrtle Grove ES | Construction | \$999,000 |
| Centennial MS | Construction | \$40,000 |
| Miami Heights ES | Construction | \$285,963 |
| Region Center III | Construction | \$257,418 |
| Hialeah-Miami Lakes SHS | Construction | \$538,742 |
| DASH | Construction | \$865,410 |
| Miami Lakes MS | Construction | \$129,386 |
| Silver Bluff ES | Construction | \$329,535 |
| Miami Lakes Educational Center | Construction | \$5,949,807 |
| JFK MS | Construction | \$999,870 |
| Norland ES | Construction | \$115,160 |
| North Miami SHS | Construction | \$219,008 |
| Thomas Jefferson MS | Construction | \$156,201 |
| Booker T Washington SHS | Construction | \$103,684 |
| Kinloch Park ES | Construction | \$138,111 |
| South Miami MS | Construction | \$857,880 |
| Sweetwater ES | Construction | \$455,377 |

| PROJECT | STATUS | AWARDS |
|--|--------------|---------------------|
| Miami Norland SHS | Construction | \$999,103 |
| Palmetto ES | Construction | \$22,000 |
| Lakeview ES | Construction | \$258,518 |
| Carol City MS | Construction | \$238,172 |
| Pinecrest ES | Construction | \$344,000 |
| ITS | Construction | \$414,166 |
| Miami Coral Park SHS | Construction | \$7,058,948 |
| Allapattah MS | Construction | \$700,000 |
| Cypress ES | Construction | \$30,404 |
| Allapattah MS | Construction | \$2,483,858 |
| David Lawrence Jr. K8 | Construction | \$960,000 |
| George T Baker Aviation | Construction | \$1,472,983 |
| Hialeah SHS | Construction | \$130,799 |
| Edison Park ES | Construction | \$76,510 |
| Parkway MS | Construction | \$850,000 |
| Total Prior Years' Projects Awarded in FY 05-06 | | \$78,727,706 |

II. HIGHLIGHTS OF FIVE-YEAR CAPITAL PLAN FOR FISCAL YEARS 2006-2010

A. Updated Demographics – Regions I through VI

1. Historical Student Enrollment

As has been the trend for the last four (4) years, total overall PK-12 student enrollment, as a blended number, has been on a decline, and between 04-05 and 05-06, most of the decline seems to have been registered at the middle school level. At the Regional Center level, overall K-12 student enrollment between 04-05 and 05-06 declined in all the Regional Centers except in Regional Center V, where it increased slightly (see Table 9).

Table 9. Historical Student Enrollment by Regional Center and District-wide (1996-2006)

| AREA | 96-97 | 97-98 | 98-99 | 99-00 | 00-01 | 01-02 | 02-03 | 03-04 | 04-05 | 05-06 |
|-------------------|---------|---------|---------|---------|---------|---------|---------|---------|---------|---------|
| REGIONAL CTR. I | 59,742 | 60,230 | 61,806 | 63,113 | 64,356 | 64,926 | 64,124 | 62,651 | 61,685 | 60,389 |
| REGIONAL CTR. II | 49,145 | 49,324 | 50,069 | 50,909 | 51,720 | 52,974 | 52,388 | 51,610 | 49,469 | 49,371 |
| REGIONAL CTR. III | 52,040 | 51,924 | 52,406 | 52,528 | 52,360 | 51,334 | 50,525 | 48,958 | 47,485 | 46,424 |
| REGIONAL CTR. IV | 52,867 | 52,531 | 51,894 | 53,618 | 54,856 | 54,350 | 52,244 | 50,097 | 48,879 | 47,124 |
| REGIONAL CTR. V | 62,195 | 64,532 | 66,052 | 67,677 | 68,347 | 68,786 | 68,330 | 67,745 | 68,191 | 68,427 |
| REGIONAL CTR. VI | 51,453 | 53,273 | 55,987 | 58,271 | 61,117 | 63,795 | 65,046 | 63,703 | 62,691 | 60,495 |
| DISTRICT-WIDE | 327,442 | 331,814 | 338,214 | 346,116 | 352,756 | 356,165 | 352,657 | 344,764 | 338,400 | 332,230 |

Figure 1- Historical Student Enrollment 1996/1997 – 2005/2006 (District Wide)

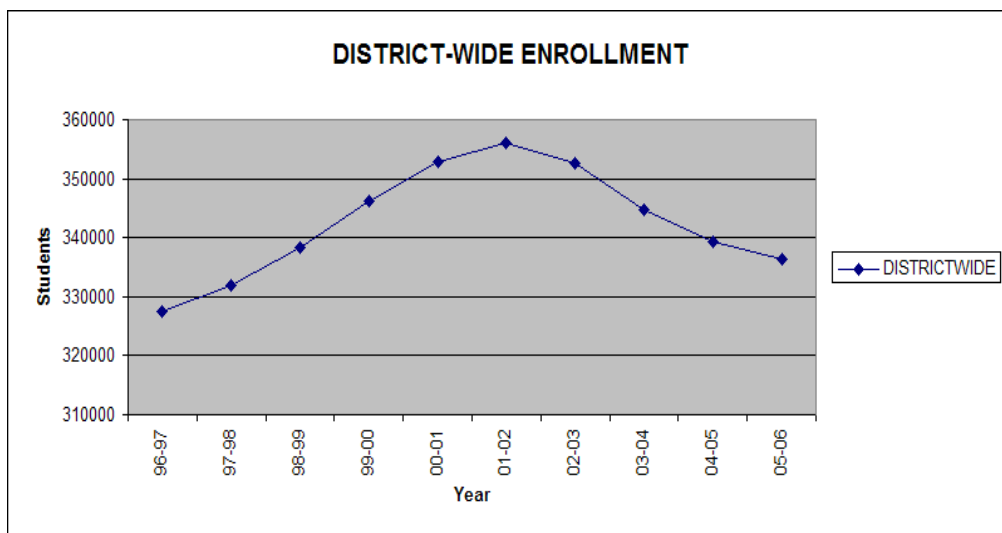
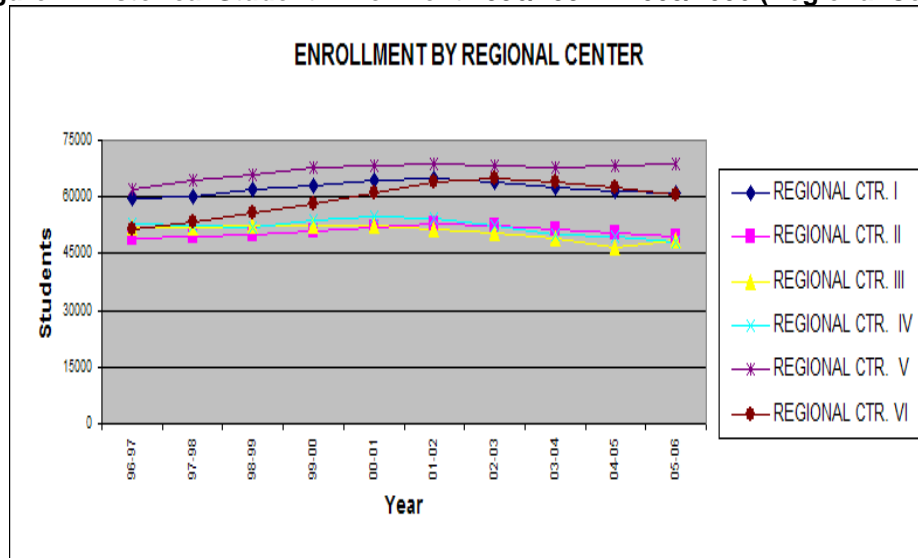


Figure 2- Historical Student Enrollment 1996/1997 – 2005/2006 (Regional Center)



In an effort to remain as attuned as possible to fluctuations in projected student enrollment v. actual, the District engaged the services of a demographer earlier this year to refresh the projections generated last year for preparation of the capital plan. Generally, the projections for 2005-2006 were consistent with actual student enrollment patterns for regional centers I, III and V but were somewhat overstated for the other regional centers, particularly in regional center VI, where there was an approximate 2,000 actual student loss from 04-05 to 05-06. A number of factors could have contributed to this gap, among them:

1. the rate of new housing unit absorption in the areas of high growth, particularly downtown Miami, along the eastern corridor, and in deep south/southwest Miami-Dade is occurring at a slower pace than predicted and therefore, the establishment of households with school aged children is lagging behind;
2. the increased costs associated with new housing units, particularly as it relates to increased property taxes and insurance costs, may be curtailing intracounty household relocation, and thus acting as a stopping agent for what in the past, was the normal recycling and churning of neighborhoods, i.e. empty nesters being replaced by households with children; and
3. increased competition from charter and private schools.

These trends should be closely monitored on a year to year basis and adjustments in new school construction may be recommended as required.

At present, however, the vast majority of new school construction and additions already completed, awarded or projected to be awarded in the next year is largely addressing the residual overcrowding from prior years, as well as the class size reduction mandate and the gradual elimination of portables. Additionally, as new school choice is made available to parents and students through a variety of new educational products, it is entirely possible if not likely, that the traditional public school environment will experience a resurgence of new students migrating from charter and/or private schools. In fact, one could argue that the District is in a unique position to continue gaining ground as the premier educational provider in this county, through innovative programming, increased choice and first rate facilities, while steadily remaining on its current course of rebuilding and reshaping the educational environment to meet existing known demands.

2. Narrowing the Overcrowding Gap

As discussed in the prior sections of this report, much has been accomplished in a relatively short period of time in the area of school construction to narrow the overcrowding gap, meet class size and eliminate portables. The table below illustrates overall improvement in the percent utilization of school facilities both at the regional center level and district-wide, measured in terms of permanent, class size adjusted FISH capacity v. enrollment, for October of 2004 and then one year later in October of 2005.

Table 10. Percent Utilization Changes- October 04 v. October 05

| SCHOOL TYPE | REGIONAL CENTER I | | REGIONAL CENTER II | | REGIONAL CENTER III | | REGIONAL CENTER IV | | REGIONAL CENTER V | | REGIONAL CENTER VI | | DISTRICT WIDE | |
|---------------|-------------------|--------|--------------------|--------|---------------------|--------|--------------------|--------|-------------------|--------|--------------------|--------|---------------|--------|
| | Oct 04 | Oct 05 | Oct 04 | Oct 05 | Oct 04 | Oct 05 | Oct 04 | Oct 05 | Oct 04 | Oct 05 | Oct 04 | Oct 05 | Oct 04 | Oct 05 |
| Elem. | 136% | 129% | 136% | 124% | 99% | 96% | 116% | 106% | 112% | 106% | 132% | 112% | 121% | 112% |
| Middle | 153% | 123% | 165% | 151% | 126% | 113% | 110% | 94% | 144% | 130% | 158% | 125% | 146% | 122% |
| K-8 | 148% | 154% | 145% | 110% | 146% | 149% | 207% | 127% | 138% | 124% | 215% | 151% | 159% | 138% |
| Senior | 139% | 132% | 137% | 126% | 148% | 125% | 109% | 109% | 150% | 149% | 133% | 132% | 136% | 130% |
| TOTAL | 141% | 130% | 142% | 129% | 118% | 108% | 115% | 105% | 130% | 123% | 139% | 121% | 131% | 120% |

Figure 3. Percent Utilization for 05-06

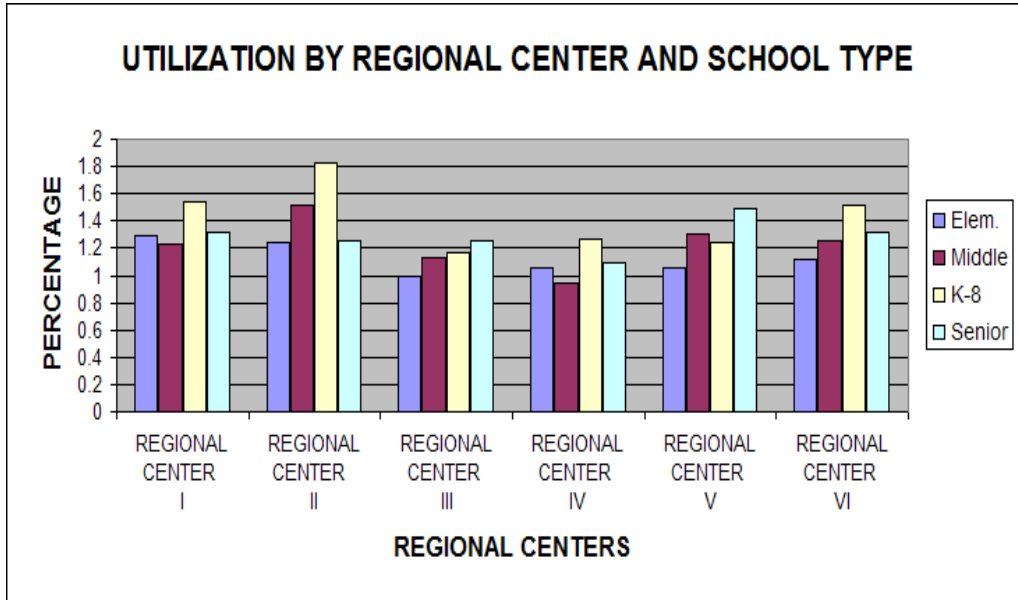
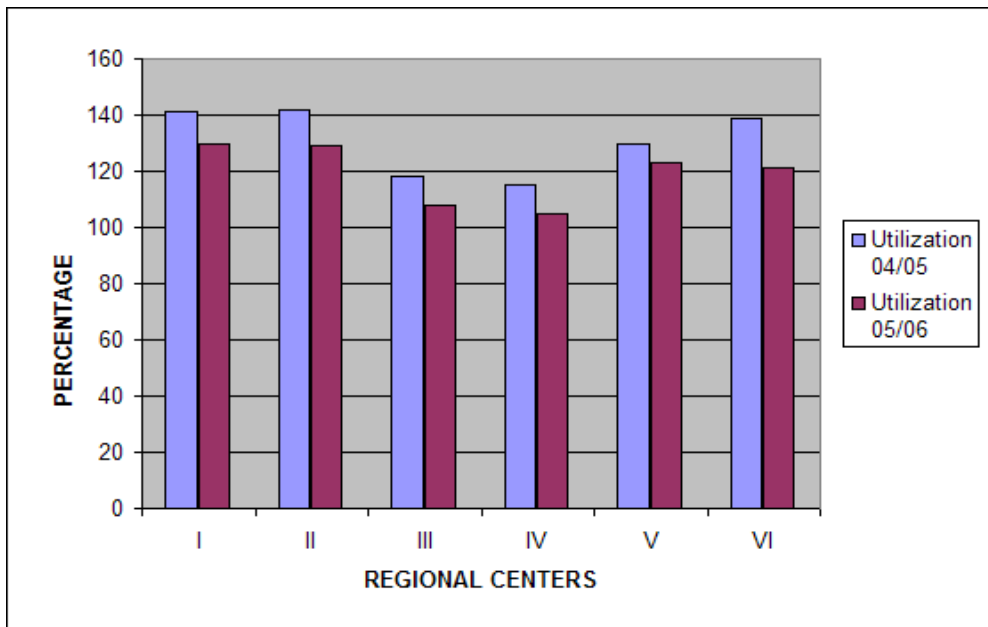


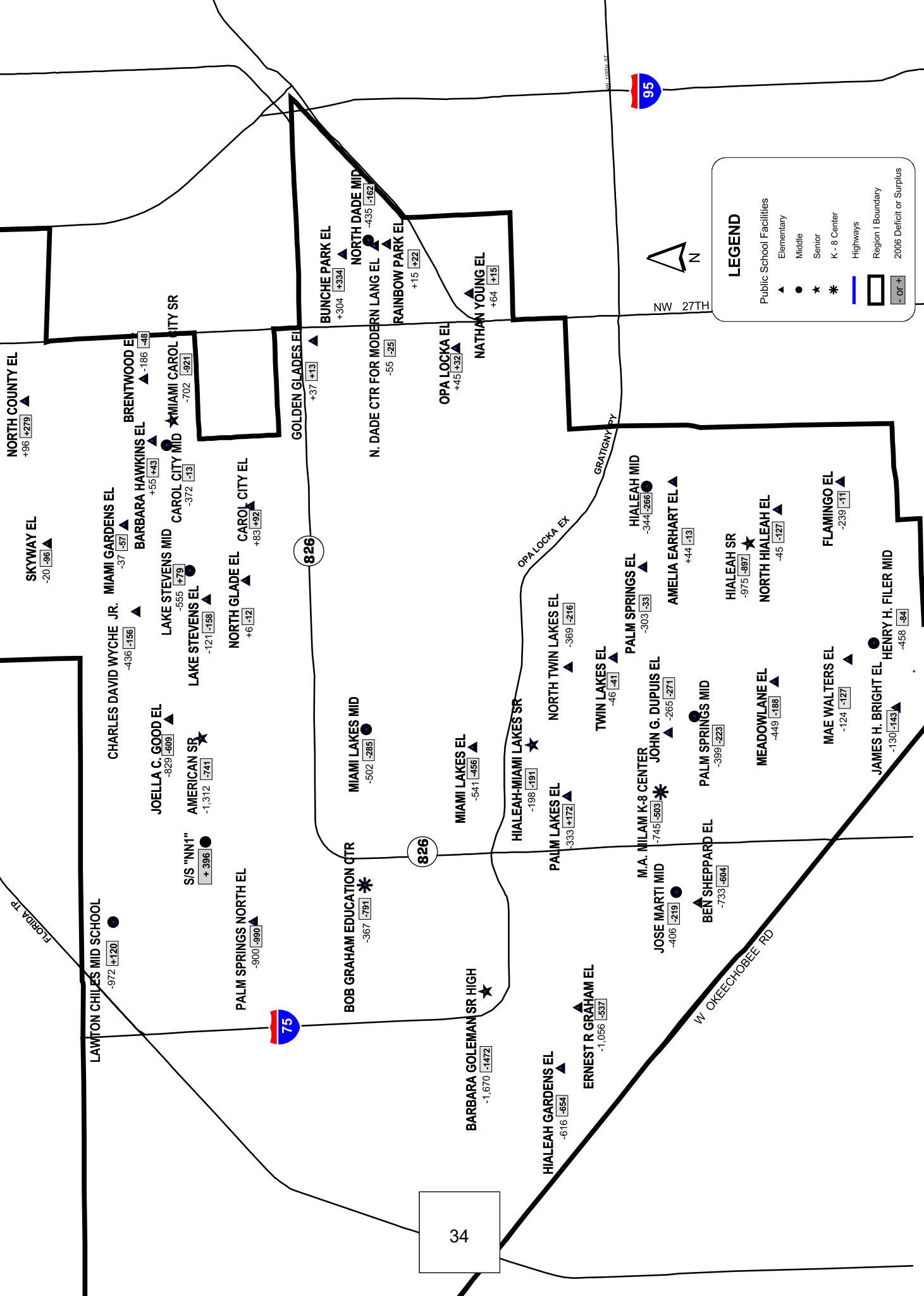
Figure 4. Percent Utilization Change 04/05 to 05/06



This year, the District's projected delivery of approximately 20,000 new student stations across the county in time for school opening 2006 will have a further positive impact on increasing capacity and decreasing percent utilization at a significant number of schools, and go a long way to narrow the overcrowding gap even more. Those anticipated changes, which will be more fully evaluated once the October 2006 FTE enrollment is reported, can in the interim be illustrated by way of the regional center maps that follow. The maps, which are an extension of those published with the April 2005 Capital Plan, were updated to show the anticipated surplus or deficit at each school once the new 2006 student stations are on line; it should be noted that because deficit or surplus at each school is a function of student stations v. enrollment, capacity gains in some schools may also be attributable to slower than expected student enrollment growth or to declining enrollment.

REGION I PUBLIC SCHOOLS

Projected conditions based on 2006 school openings

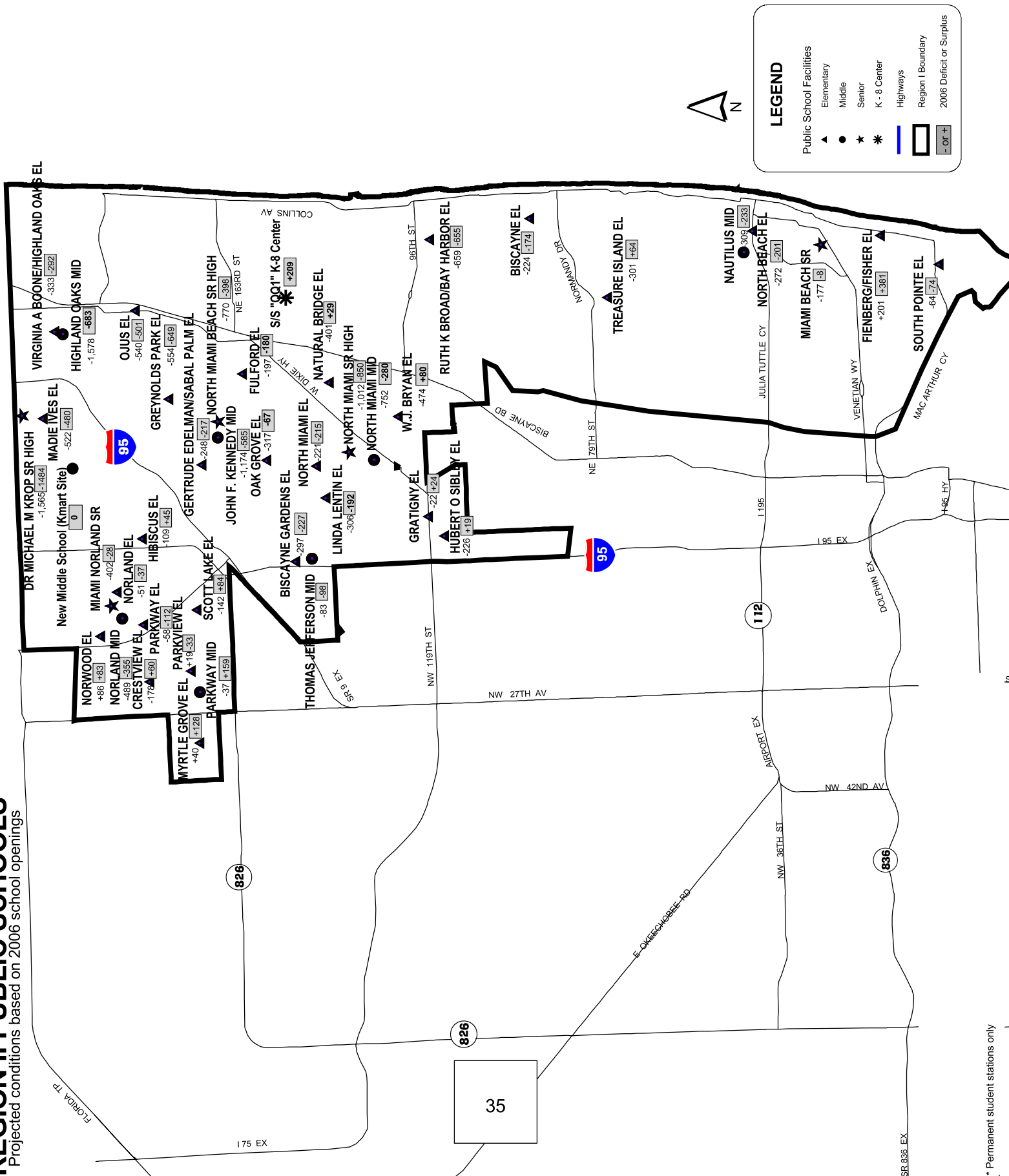


34

* Permanent student stations only

REGION II PUBLIC SCHOOLS

Projected conditions based on 2006 school openings



* Permanent student stations only

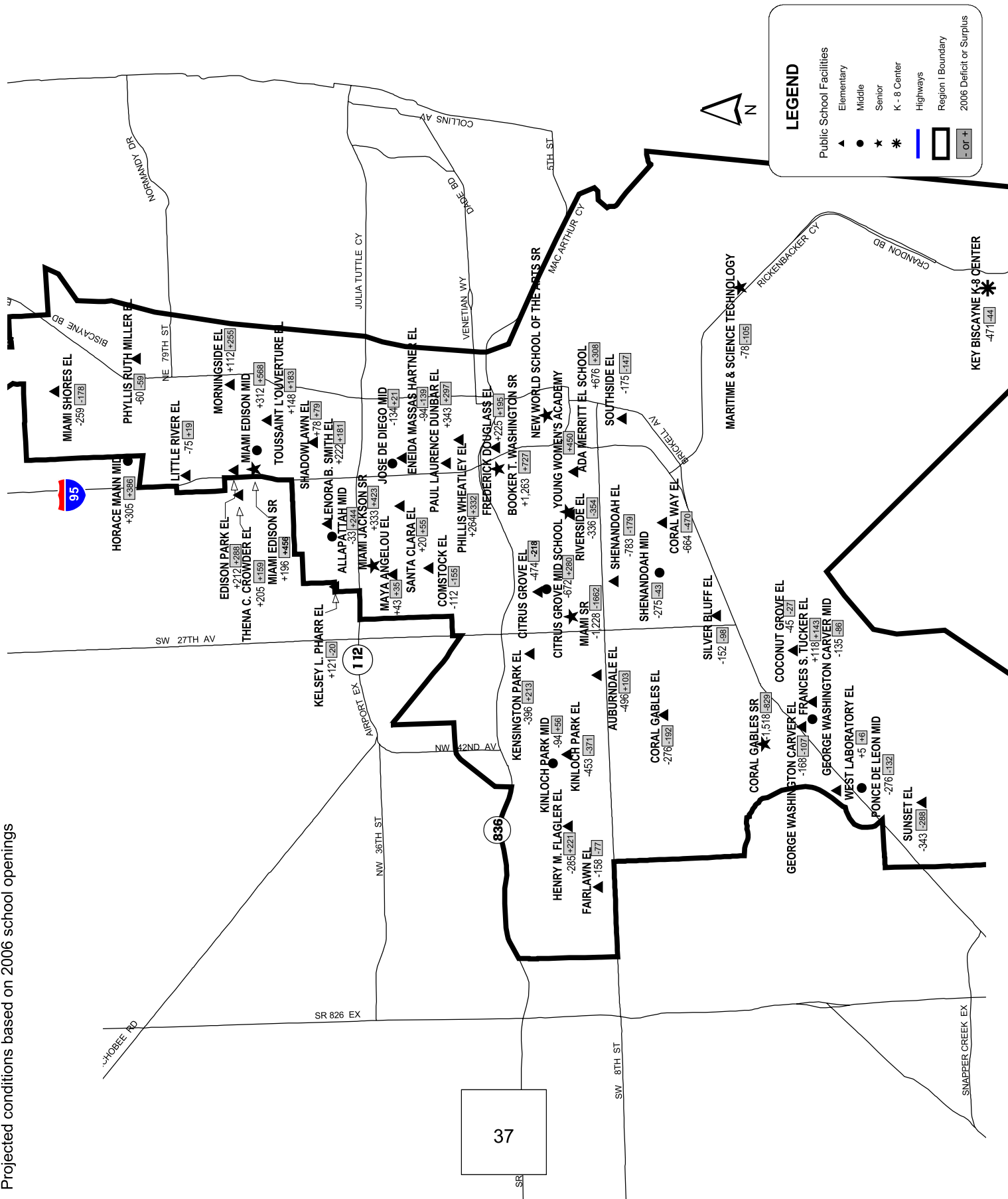
REGION IV PUBLIC SCHOOLS

Projected conditions based on 2006 school openings

37

LEGEND

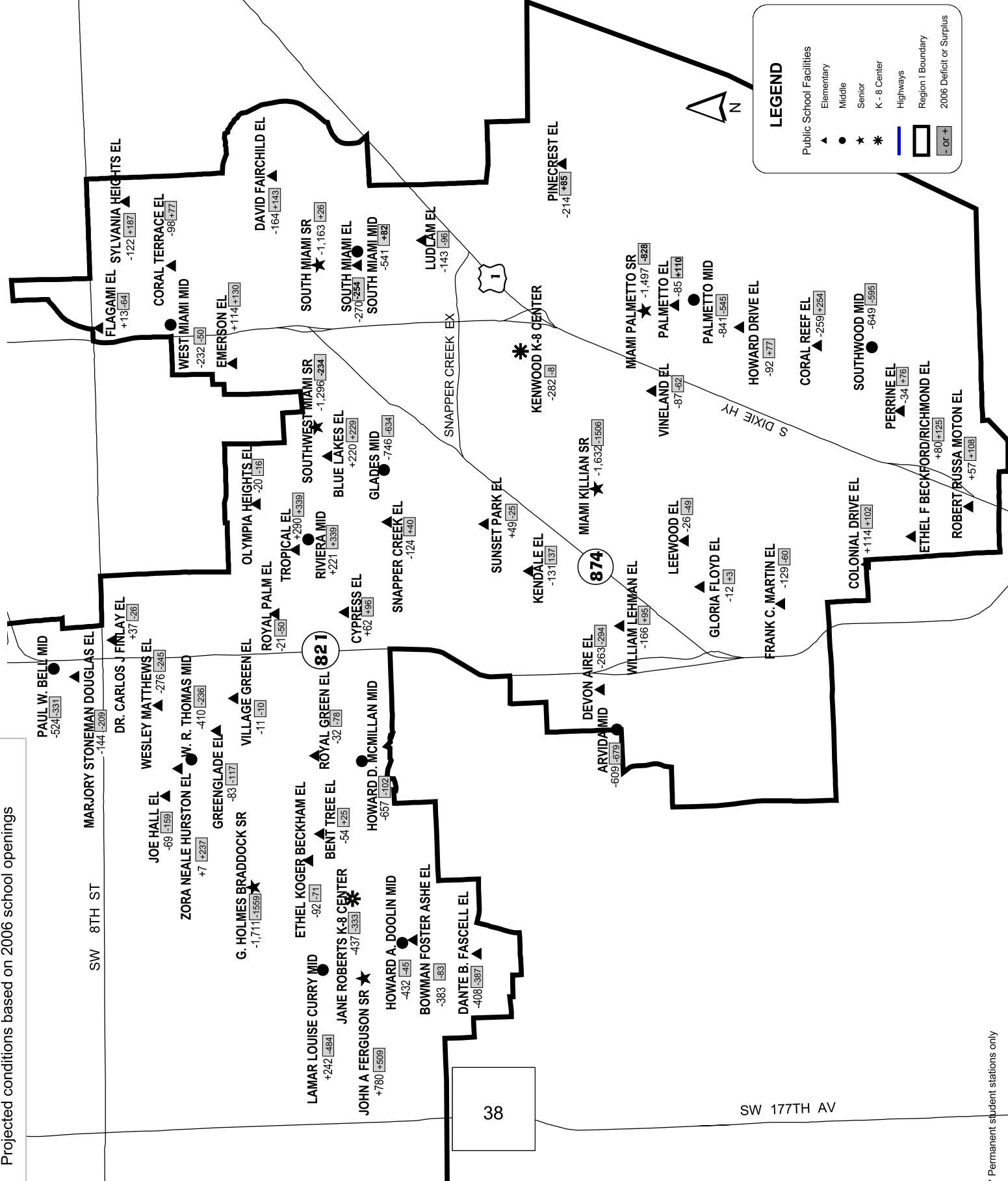
- Public School Facilities
 - ▲ Elementary
 - Middle
 - ★ Senior
 - * K - 8 Center
- Highways
- Region I Boundary
- 2006 Deficit or Surplus
 - Or +



* Permanent student stations only

REGION V PUBLIC SCHOOLS

Projected conditions based on 2006 school openings



LEGEND

Public School Facilities

- ▲ Elementary
- Middle
- ★ Senior
- * K - 8 Center

Highways

Region I Boundary

2006 Deficit or Surplus

- Or +

38

SW 177TH AV

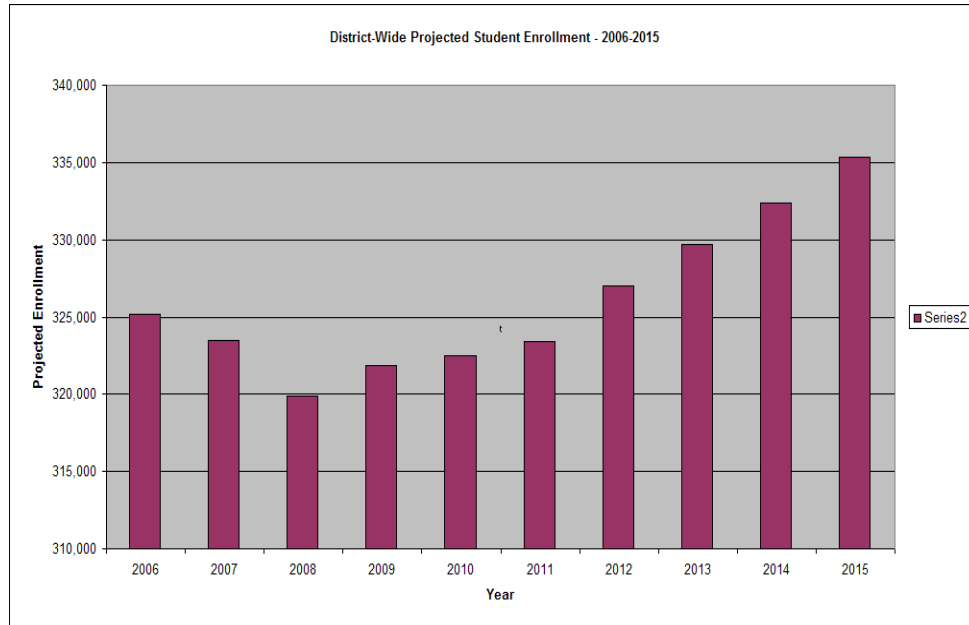
* Permanent student stations only

3. Projected Enrollment

Based on the actual 2005 October FTE student enrollment data, the District's demographers reviewed the enrollment projection data previously issued in late 2004 and made some adjustments to future student enrollment projections, based on the cohort survival method (see Tables 11 through 17 below). Generally, most of the adjustments occurred in regional centers II, IV and VI and a brief discussion of some of the factors potentially affecting future student enrollment, follows.

| Year | KG | 1 | 2 | 3 | 4 | 5 | 6 | 7 | 8 | 9 | 10 | 11 | 12 | Total |
|------|--------|--------|--------|--------|--------|--------|--------|--------|--------|--------|--------|--------|--------|---------|
| 2006 | 25,740 | 26,008 | 25,425 | 28,609 | 24,699 | 25,097 | 25,561 | 21,137 | 25,169 | 30,926 | 23,680 | 23,469 | 19,687 | 325,208 |
| 2007 | 25,824 | 26,961 | 25,931 | 28,182 | 25,172 | 24,649 | 24,988 | 25,205 | 20,686 | 29,922 | 24,909 | 20,195 | 20,871 | 323,496 |
| 2008 | 25,861 | 27,050 | 26,880 | 28,790 | 24,823 | 25,119 | 24,611 | 24,661 | 24,649 | 24,163 | 24,131 | 21,230 | 17,934 | 319,902 |
| 2009 | 26,159 | 27,090 | 26,970 | 29,821 | 25,321 | 24,777 | 25,174 | 24,313 | 24,123 | 29,000 | 19,603 | 20,621 | 18,875 | 321,845 |
| 2010 | 26,425 | 27,403 | 27,010 | 29,919 | 26,144 | 25,266 | 24,802 | 24,892 | 23,823 | 28,305 | 23,331 | 16,792 | 18,386 | 322,499 |
| 2011 | 26,296 | 27,683 | 27,323 | 29,963 | 26,239 | 26,090 | 25,319 | 24,512 | 24,395 | 27,893 | 22,780 | 19,931 | 14,980 | 323,404 |
| 2012 | 26,554 | 27,603 | 27,579 | 30,277 | 26,298 | 26,190 | 25,499 | 25,101 | 24,157 | 28,263 | 22,619 | 19,579 | 17,289 | 327,008 |
| 2013 | 26,856 | 27,845 | 27,470 | 30,620 | 26,599 | 26,232 | 26,257 | 25,841 | 24,508 | 28,153 | 22,841 | 19,145 | 17,363 | 329,729 |
| 2014 | 27,133 | 28,138 | 27,764 | 30,471 | 26,880 | 26,545 | 26,306 | 25,939 | 25,291 | 28,732 | 22,571 | 19,526 | 17,102 | 332,398 |
| 2015 | 27,408 | 28,430 | 28,057 | 30,797 | 26,760 | 26,826 | 26,621 | 25,990 | 25,390 | 29,324 | 22,980 | 19,290 | 17,443 | 335,314 |

**Figure 5. District-Wide Projected Student Enrollment
2006-2015**



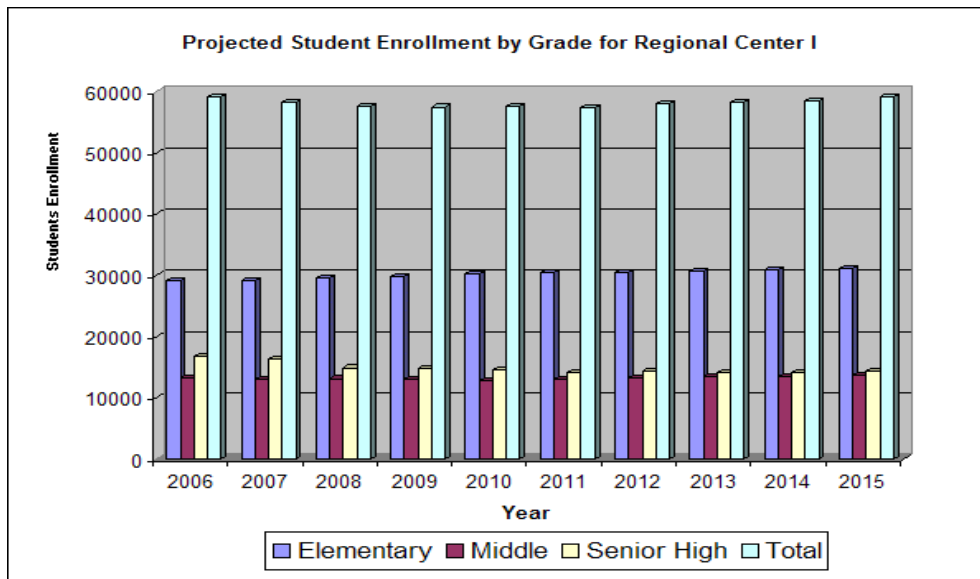
As can be seen from the above table, student enrollment at the district-wide level is projected to dip through 2008, after which it is expected to rebound and steadily increase through 2015. These projections are based primarily on the cohort survival method, which uses the past to predict the future; it also takes into consideration information provided to the demographers by the District on known residential development, proposed or on-going. Because of the fluid nature of real estate, particularly at the present time, where supply seems to be have outpaced demand, it is especially important to refresh these projections on a yearly basis to ensure that, as much as possible, new capacity projects remain relevant.

At illustrated in the tables below, at the Regional Center level, Regional Centers II and VI are expected to experience the most significant growth in projected student enrollment, with increases of approximately 3,000 and 6,000 students, respectively. Projected student enrollment growth in the remaining Regional Centers show either a dip in enrollment and a recovery back to the 2006 level (Regional Centers I and III), or register a slight increase over time (Regional Centers IV and V).

**Table 12. Projected Student Enrollment by Grade for Regional Center I
2006-2015**

| Year | KG | 1 | 2 | 3 | 4 | 5 | 6 | 7 | 8 | 9 | 10 | 11 | 12 | Total |
|------|-------|-------|-------|-------|-------|-------|-------|-------|-------|-------|-------|-------|-------|--------|
| 2006 | 4,739 | 4,879 | 4,762 | 5,576 | 4,426 | 4,817 | 4,572 | 3,958 | 4,594 | 4,925 | 4,109 | 4,141 | 3,568 | 59,065 |
| 2007 | 4,753 | 4,955 | 4,965 | 5,447 | 4,598 | 4,448 | 4,615 | 4,477 | 3,821 | 4,969 | 4,036 | 3,583 | 3,662 | 58,329 |
| 2008 | 4,759 | 4,970 | 5,044 | 5,682 | 4,500 | 4,621 | 4,270 | 4,526 | 4,320 | 4,098 | 4,070 | 3,519 | 3,170 | 57,549 |
| 2009 | 4,812 | 4,976 | 5,059 | 5,777 | 4,683 | 4,523 | 4,429 | 4,187 | 4,369 | 4,657 | 3,367 | 3,552 | 3,114 | 57,505 |
| 2010 | 4,859 | 5,032 | 5,065 | 5,794 | 4,761 | 4,707 | 4,352 | 4,346 | 4,044 | 4,688 | 3,825 | 2,938 | 3,141 | 57,552 |
| 2011 | 4,820 | 5,082 | 5,122 | 5,801 | 4,775 | 4,786 | 4,510 | 4,266 | 4,196 | 4,315 | 3,847 | 3,336 | 2,598 | 57,454 |
| 2012 | 4,867 | 5,041 | 5,172 | 5,866 | 4,781 | 4,801 | 4,597 | 4,426 | 4,119 | 4,503 | 3,541 | 3,358 | 2,951 | 58,023 |
| 2013 | 4,913 | 5,089 | 5,131 | 5,924 | 4,835 | 4,807 | 4,611 | 4,513 | 4,272 | 4,385 | 3,696 | 3,093 | 2,970 | 58,239 |
| 2014 | 4,958 | 5,137 | 5,180 | 5,876 | 4,882 | 4,860 | 4,617 | 4,527 | 4,358 | 4,590 | 3,603 | 3,226 | 2,735 | 58,551 |
| 2015 | 5,003 | 5,185 | 5,229 | 5,933 | 4,843 | 4,908 | 4,669 | 4,533 | 4,371 | 4,637 | 3,767 | 3,145 | 2,854 | 59,077 |

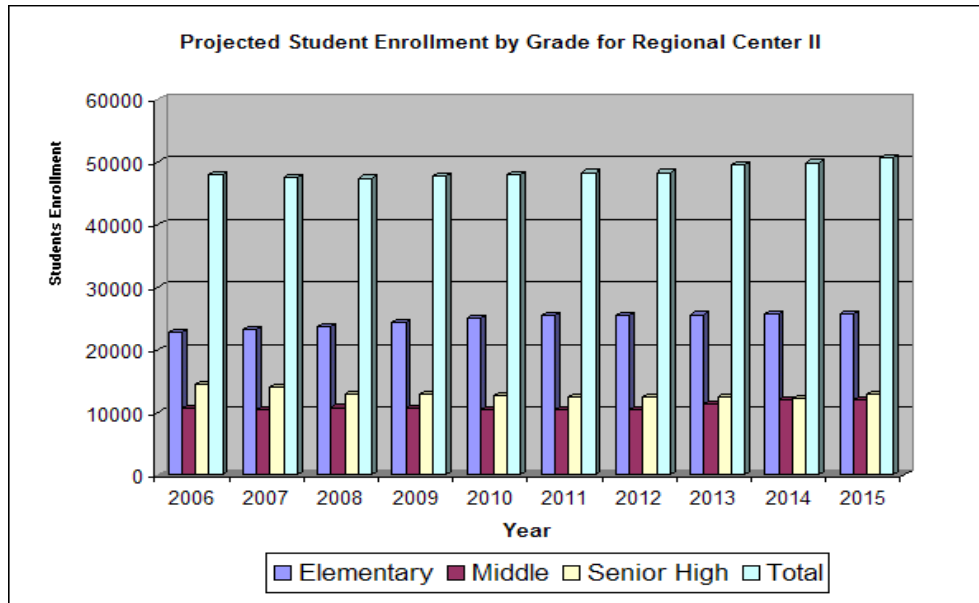
**Figure 6. Projected Student Enrollment by Grade for Regional Center
2006-2015**



**Table 13. Projected Student Enrollment by Grade for Regional Center II
2006-2015**

| Year | KG | 1 | 2 | 3 | 4 | 5 | 6 | 7 | 8 | 9 | 10 | 11 | 12 | Total |
|------|-------|-------|-------|-------|-------|-------|-------|-------|-------|-------|-------|-------|-------|--------|
| 2006 | 4,235 | 3,650 | 3,658 | 4,232 | 3,411 | 3,623 | 3,909 | 3,114 | 3,570 | 4,402 | 3,766 | 3,381 | 2,989 | 47,938 |
| 2007 | 4,230 | 4,311 | 3,611 | 4,099 | 3,544 | 3,385 | 3,760 | 3,811 | 2,939 | 4,143 | 3,738 | 3,209 | 2,853 | 47,633 |
| 2008 | 4,217 | 4,305 | 4,270 | 4,051 | 3,425 | 3,519 | 3,508 | 3,671 | 3,599 | 3,420 | 3,527 | 3,185 | 2,730 | 47,426 |
| 2009 | 4,246 | 4,292 | 4,264 | 4,788 | 3,379 | 3,399 | 3,695 | 3,421 | 3,467 | 4,181 | 2,912 | 3,026 | 2,700 | 47,769 |
| 2010 | 4,269 | 4,322 | 4,251 | 4,782 | 4,002 | 3,352 | 3,552 | 3,622 | 3,231 | 4,027 | 3,561 | 2,503 | 2,579 | 48,052 |
| 2011 | 4,217 | 4,345 | 4,280 | 4,767 | 3,997 | 3,972 | 3,474 | 3,474 | 3,423 | 3,765 | 3,432 | 3,058 | 2,133 | 48,338 |
| 2012 | 4,217 | 4,345 | 4,280 | 4,767 | 3,997 | 3,972 | 3,474 | 3,474 | 3,423 | 3,765 | 3,432 | 3,058 | 2,133 | 48,338 |
| 2013 | 4,262 | 4,315 | 4,252 | 4,826 | 4,012 | 3,954 | 4,130 | 4,039 | 3,193 | 3,815 | 3,414 | 2,755 | 2,514 | 49,480 |
| 2014 | 4,283 | 4,338 | 4,274 | 4,767 | 4,034 | 3,981 | 4,117 | 4,034 | 3,813 | 3,709 | 3,252 | 2,943 | 2,353 | 49,899 |
| 2015 | 4,303 | 4,359 | 4,296 | 4,793 | 3,985 | 4,003 | 4,145 | 4,022 | 3,809 | 4,443 | 3,157 | 2,791 | 2,518 | 50,624 |

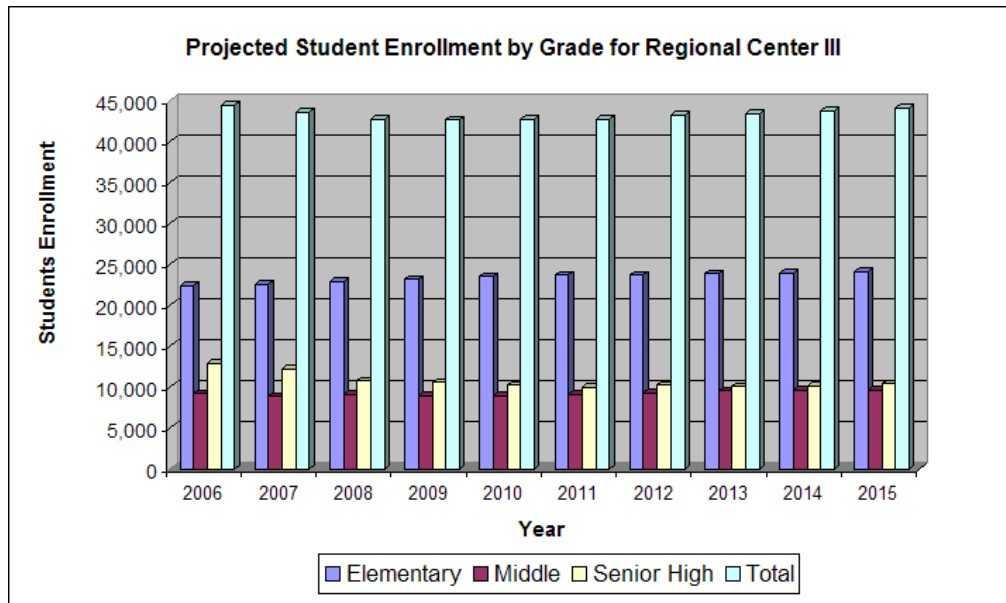
**Figure 7. Projected Student Enrollment by Grade for Regional Center II
2006-2015**



**Table 14. Projected Student Enrollment by Grade for Regional Center III
2006-2015**

| Year | KG | 1 | 2 | 3 | 4 | 5 | 6 | 7 | 8 | 9 | 10 | 11 | 12 | Total |
|------|-------|-------|-------|-------|-------|-------|-------|-------|-------|-------|-------|-------|-------|--------|
| 2006 | 3,854 | 3,833 | 3,602 | 4,248 | 3,382 | 3,459 | 3,381 | 2,604 | 3,196 | 3,930 | 3,148 | 3,113 | 2,726 | 44,476 |
| 2007 | 3,858 | 3,983 | 3,757 | 4,117 | 3,485 | 3,373 | 3,182 | 3,194 | 2,500 | 3,764 | 3,045 | 2,667 | 2,716 | 43,641 |
| 2008 | 3,855 | 3,987 | 3,903 | 4,312 | 3,385 | 3,475 | 3,101 | 3,003 | 3,058 | 2,905 | 2,922 | 2,569 | 2,330 | 42,803 |
| 2009 | 3,890 | 3,984 | 3,906 | 4,467 | 3,527 | 3,379 | 3,187 | 2,934 | 2,872 | 3,586 | 2,281 | 2,471 | 2,241 | 42,726 |
| 2010 | 3,920 | 4,020 | 3,903 | 4,472 | 3,665 | 3,518 | 3,134 | 3,017 | 2,813 | 3,378 | 2,793 | 1,948 | 2,163 | 42,744 |
| 2011 | 3,886 | 4,051 | 3,939 | 4,468 | 3,668 | 3,656 | 3,266 | 2,962 | 2,893 | 3,284 | 2,621 | 2,372 | 1,705 | 42,770 |
| 2012 | 3,920 | 4,016 | 3,970 | 4,509 | 3,665 | 3,659 | 3,380 | 3,080 | 2,837 | 3,375 | 2,557 | 2,225 | 2,076 | 43,269 |
| 2013 | 3,954 | 4,051 | 3,935 | 4,544 | 3,699 | 3,656 | 3,384 | 3,194 | 2,946 | 3,320 | 2,629 | 2,179 | 1,948 | 43,439 |
| 2014 | 3,988 | 4,086 | 3,970 | 4,504 | 3,727 | 3,690 | 3,381 | 3,197 | 3,059 | 3,465 | 2,584 | 2,239 | 1,912 | 43,802 |
| 2015 | 4,021 | 4,121 | 4,004 | 4,544 | 3,695 | 3,718 | 3,412 | 3,194 | 3,062 | 3,583 | 2,678 | 2,205 | 1,966 | 44,203 |

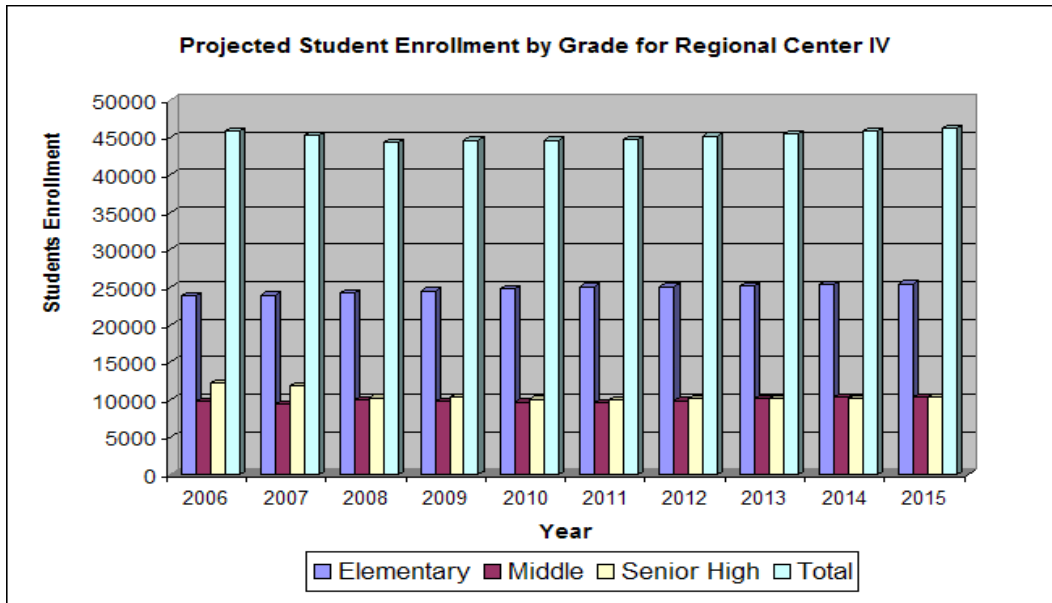
**Figure 8. Projected Student Enrollment by Grade for Regional Center III
2006-2015**



**Table 15. Projected Student Enrollment by Grade for Regional Center IV
2006-2015**

| Year | KG | 1 | 2 | 3 | 4 | 5 | 6 | 7 | 8 | 9 | 10 | 11 | 12 | Total |
|------|-------|-------|-------|-------|-------|-------|-------|-------|-------|-------|-------|-------|-------|--------|
| 2006 | 4,120 | 4,071 | 3,919 | 4,324 | 3,714 | 3,671 | 3,524 | 2,721 | 3,527 | 4,068 | 2,847 | 2,965 | 2,386 | 45,856 |
| 2007 | 4,111 | 4,355 | 3,975 | 4,286 | 3,641 | 3,626 | 3,460 | 3,336 | 2,644 | 3,892 | 3,058 | 2,268 | 2,584 | 45,236 |
| 2008 | 4,095 | 4,345 | 4,250 | 4,352 | 3,608 | 3,555 | 3,412 | 3,284 | 3,236 | 2,916 | 2,932 | 2,447 | 1,975 | 44,407 |
| 2009 | 4,120 | 4,328 | 4,242 | 4,648 | 3,666 | 3,525 | 3,366 | 3,239 | 3,187 | 3,604 | 2,234 | 2,340 | 2,125 | 44,624 |
| 2010 | 4,140 | 4,355 | 4,225 | 4,639 | 3,911 | 3,582 | 3,331 | 3,200 | 3,142 | 3,558 | 2,709 | 1,796 | 2,028 | 44,615 |
| 2011 | 4,119 | 4,376 | 4,251 | 4,620 | 3,903 | 3,819 | 3,383 | 3,170 | 3,107 | 3,528 | 2,681 | 2,169 | 1,567 | 44,692 |
| 2012 | 4,152 | 4,353 | 4,271 | 4,649 | 3,887 | 3,811 | 3,612 | 3,217 | 3,077 | 3,500 | 2,656 | 2,143 | 1,880 | 45,209 |
| 2013 | 4,184 | 4,388 | 4,249 | 4,671 | 3,911 | 3,796 | 3,605 | 3,434 | 3,123 | 3,479 | 2,643 | 2,122 | 1,867 | 45,474 |
| 2014 | 4,216 | 4,423 | 4,283 | 4,647 | 3,930 | 3,819 | 3,591 | 3,427 | 3,334 | 3,534 | 2,626 | 2,122 | 1,850 | 45,803 |
| 2015 | 4,248 | 4,457 | 4,317 | 4,684 | 3,910 | 3,838 | 3,613 | 3,413 | 3,327 | 3,742 | 2,667 | 2,099 | 1,852 | 46,167 |

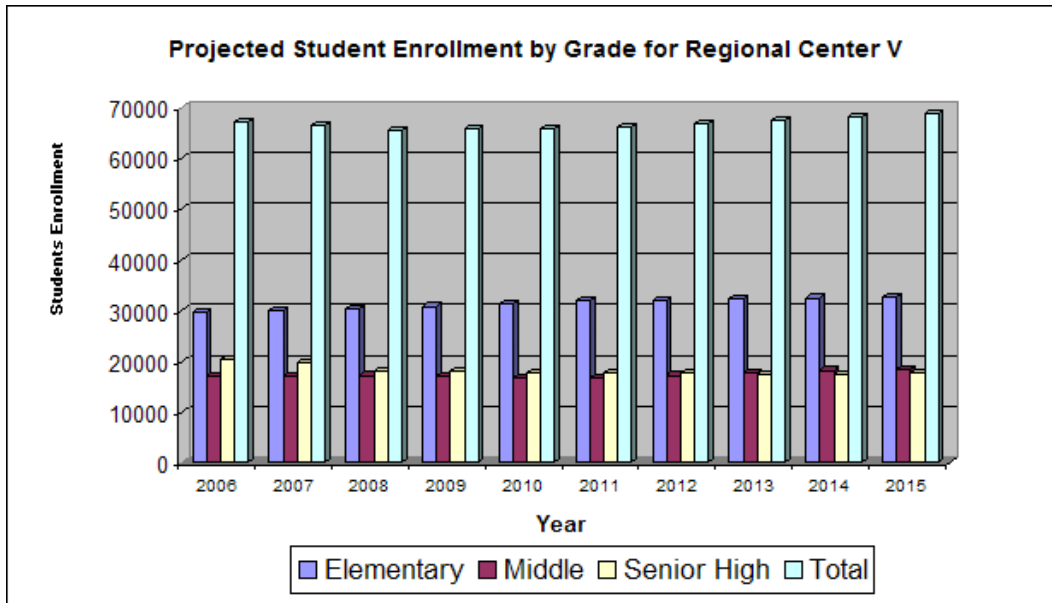
**Figure 9. Projected Student Enrollment by Grade for Regional Center IV
2006-2015**



**Table 16. Projected Student Enrollment by Grade for Regional Center V
2006-2015**

| Year | KG | 1 | 2 | 3 | 4 | 5 | 6 | 7 | 8 | 9 | 10 | 11 | 12 | Total |
|------|-------|-------|-------|-------|-------|-------|-------|-------|-------|-------|-------|-------|-------|--------|
| 2006 | 4,852 | 4,780 | 4,858 | 5,128 | 4,973 | 5,110 | 5,675 | 5,447 | 5,930 | 6,419 | 4,765 | 5,061 | 4,115 | 67,113 |
| 2007 | 4,867 | 5,181 | 4,854 | 5,137 | 4,897 | 5,042 | 5,606 | 5,850 | 5,488 | 6,014 | 5,107 | 4,060 | 4,486 | 66,590 |
| 2008 | 4,873 | 5,197 | 5,262 | 5,134 | 4,907 | 4,963 | 5,551 | 5,778 | 5,888 | 5,409 | 4,757 | 4,332 | 3,560 | 65,612 |
| 2009 | 4,928 | 5,204 | 5,278 | 5,565 | 4,905 | 4,974 | 5,456 | 5,727 | 5,817 | 5,926 | 4,288 | 4,038 | 3,809 | 65,915 |
| 2010 | 4,977 | 5,263 | 5,285 | 5,582 | 5,317 | 4,973 | 5,456 | 5,626 | 5,768 | 5,853 | 4,680 | 3,640 | 3,558 | 65,978 |
| 2011 | 4,943 | 5,316 | 5,345 | 5,589 | 5,333 | 5,390 | 5,483 | 5,623 | 5,666 | 5,769 | 4,625 | 3,967 | 3,223 | 66,271 |
| 2012 | 4,995 | 5,278 | 5,398 | 5,652 | 5,340 | 5,406 | 5,923 | 5,656 | 5,660 | 5,705 | 4,562 | 3,925 | 3,498 | 66,999 |
| 2013 | 5,048 | 5,335 | 5,360 | 5,709 | 5,401 | 5,413 | 5,941 | 6,108 | 5,695 | 5,697 | 4,506 | 3,879 | 3,461 | 67,553 |
| 2014 | 5,100 | 5,391 | 5,417 | 5,669 | 5,454 | 5,475 | 5,949 | 6,127 | 6,150 | 5,686 | 4,496 | 3,821 | 3,416 | 68,149 |
| 2015 | 5,151 | 5,446 | 5,474 | 5,729 | 5,416 | 5,529 | 6,016 | 6,135 | 6,169 | 6,161 | 4,496 | 3,823 | 3,363 | 68,910 |

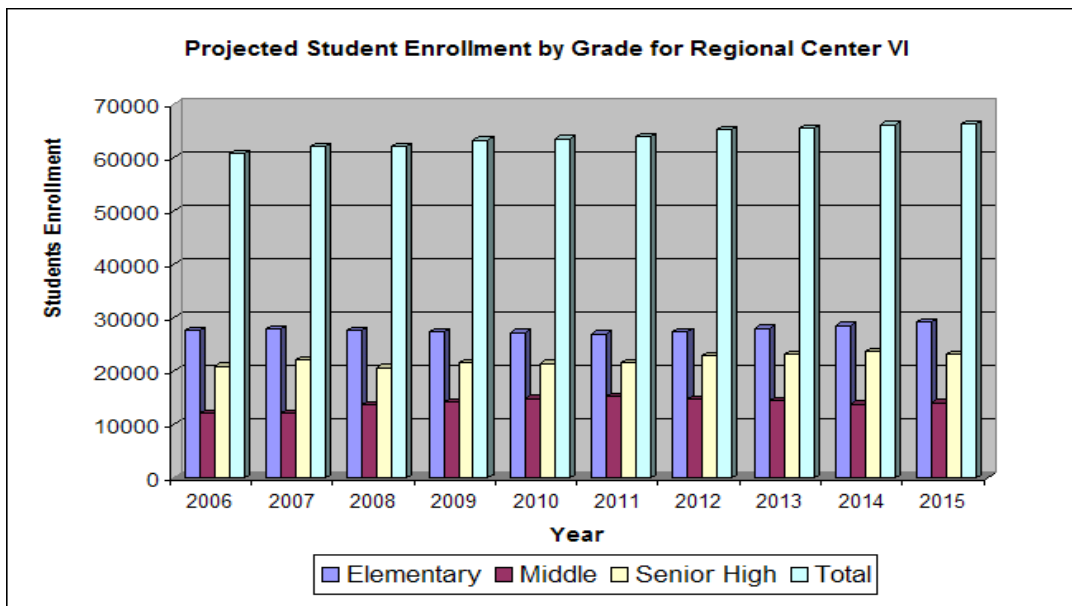
**Figure 10. Projected Student Enrollment by Grade for Regional Center V
2006-2015**



**Table 17. Projected Student Enrollment by Grade for Regional Center VI
2006-2015**

| Year | KG | 1 | 2 | 3 | 4 | 5 | 6 | 7 | 8 | 9 | 10 | 11 | 12 | Total |
|------|-------|-------|-------|-------|-------|-------|-------|-------|-------|-------|-------|-------|-------|--------|
| 2006 | 3,941 | 4,796 | 4,626 | 5,101 | 4,794 | 4,417 | 4,501 | 3,293 | 4,352 | 7,181 | 5,046 | 4,808 | 3,904 | 60,760 |
| 2007 | 4,005 | 4,176 | 4,769 | 5,096 | 5,007 | 4,776 | 4,364 | 4,538 | 3,293 | 7,140 | 5,925 | 4,408 | 4,571 | 62,068 |
| 2008 | 4,063 | 4,245 | 4,152 | 5,260 | 4,998 | 4,986 | 4,769 | 4,400 | 4,548 | 5,414 | 5,924 | 5,177 | 4,169 | 62,105 |
| 2009 | 4,163 | 4,305 | 4,220 | 4,576 | 5,160 | 4,977 | 5,042 | 4,806 | 4,411 | 7,045 | 4,521 | 5,194 | 4,886 | 63,306 |
| 2010 | 4,259 | 4,411 | 4,281 | 4,651 | 4,489 | 5,135 | 4,978 | 5,082 | 4,824 | 6,801 | 5,763 | 3,967 | 4,917 | 63,558 |
| 2011 | 4,312 | 4,514 | 4,386 | 4,718 | 4,562 | 4,468 | 5,203 | 5,017 | 5,109 | 7,232 | 5,575 | 5,030 | 3,753 | 63,878 |
| 2012 | 4,403 | 4,569 | 4,488 | 4,834 | 4,627 | 4,541 | 4,512 | 5,248 | 5,039 | 7,416 | 5,871 | 4,869 | 4,751 | 65,169 |
| 2013 | 4,495 | 4,666 | 4,543 | 4,946 | 4,741 | 4,606 | 4,586 | 4,553 | 5,279 | 7,456 | 5,953 | 5,118 | 4,603 | 65,544 |
| 2014 | 4,588 | 4,764 | 4,639 | 5,007 | 4,851 | 4,719 | 4,652 | 4,627 | 4,577 | 7,748 | 6,010 | 5,175 | 4,836 | 66,194 |
| 2015 | 4,681 | 4,862 | 4,736 | 5,113 | 4,911 | 4,829 | 4,766 | 4,693 | 4,652 | 6,757 | 6,215 | 5,227 | 4,890 | 66,333 |

**Figure 11. Projected Student Enrollment by Grade for Regional Center VI
2006-2015**



As briefly alluded to previously, some adjustments were made this year to student enrollment projections to reflect actual October 2005 FTE enrollment v. what was originally projected, most notably in three of the six regional centers: II, IV and VI; all of which, interestingly enough, are the areas of the county still experiencing the greatest level of development activity. It appears however, that the rate at which new units are being made available to the consumer far outpaces the consumer's absorption rate, as recently well publicized in trade journals and as tracked by real estate watchdogs. Residential development in Regional Centers II and IV has been driven primarily by infill and redevelopment as part of the *Eastward Ho!* movement. Until such time that demand catches up or comes closer to the

supply, it is likely that student enrollment generated by the units in place, as well as in construction or projected, will remain low. Regional Center VI continues to see development, primarily of a suburban nature; however, the anticipated student enrollment increase seems to be lagging behind the number of units built or ready for occupancy. And while the housing product in deep south Miami-Dade is generally more traditional and perhaps of wider appeal to families with children, housing affordability factors may be stymieing or delaying intracounty mobility and the eventual establishment of the more traditional family neighborhoods. It is imperative that the District remain alert to enrollment fluctuations to ensure available resources are used where the need is and when it is most needed.

B. Summary of Proposed Adjustments to Capacity Projects for Fiscal Years 2006-2010 by Regional Center

While the vast majority of projects initially proposed in the 2005 Capital Plan remain unchanged in each of the six regional centers, a few proposed noteworthy adjustments are summarized below. Additionally, proposed funding allocations were adjusted where needed to more accurately reflect market conditions based on actual recent construction awards for similar projects.

Regional Center I:

1. Miami Carol City Senior High School will be built in two phases, with the first phase funded in FY 06-07 to accommodate students previously attending American Senior High and now attending or projected to attend Miami Carol City Senior High as a result of boundary adjustments. Phasing this project in this manner will allow the District to accommodate approximately 800 students in permanent quarters and eliminate the need for portable units;
2. Three new modular additions are proposed for funding in FY 07-08 at Bright/Johnson Elementary School, Lake Stevens Elementary School and Dupuis Elementary School to address projected continued healthy enrollment and meet class size;
3. Miami Lakes Elementary, previously funded for a modular addition will now be converted this year to a K-8 center and retrofitted to accommodate elementary student enrollment needs.

Regional Center II:

1. Due to decreased enrollment at Nautilus Middle and continued healthy enrollment at both North Beach and Biscayne Elementary Schools, a proposed addition of a modular to convert Treasure Island Elementary to a K-8 is now proposed as an elementary addition instead, to relieve these two schools. This addition will also allow for the deferral of a new elementary school reliever initially contemplated in the 2005 Plan;
2. The construction of State School E-1 and North Miami Middle replacement has been advanced to FY 06-07, as a result of the Interlocal Agreement between the District and the City of North Miami. Under the same Agreement, funding for State School BBB1, the replacement for North Miami Senior, has been deferred to FY 08-09 under the premise that the City will provide interim financing;

3. A new modular addition is proposed at Parkway Elementary to meet class size and accommodate student enrollment growth not previously anticipated.

Regional Center III:

1. Construction funding for State School GGG1, a new senior high school intended to relieve Miami Coral Park and Holmes G. Braddock Senior High Schools, as well as to capture future senior high school enrollment needs in the Doral area, is proposed to be advanced to FY 07-08 from FY 08-09;
2. Three new small modular additions are proposed in FY 07-08 for Springview, Miami Springs and Everglades K-8 Center, in lieu of the previously proposed new elementary school as enrollment at these schools is not projected to increase beyond current levels and the collective need is less than would be provided by an entirely new facility. Additionally, the modular buildings will eliminate the need for site acquisition in an area of the county where vacant land is largely unavailable.

Regional Center IV:

1. Two new special interest secondary schools were added to this regional center in Fiscal Years 2006-2007 and 2007-2008: one is the Young Men's Preparatory Academy to be housed at the former Buena Vista Elementary School, and the second is the Law Enforcement and Forensic Studies High School to be co-located with the Miami Police Department's proposed new police college facility in Downtown Miami;
2. Two other special interest secondary schools were added for funding in years four and five of the Plan: one is a Medical Technologies Senior High School and the other is the Museum of Science High School, to be co-located with the proposed Museum of Science at Bayfront Park;
3. Two proposed new elementary schools were deferred as a result of recent additions at either the schools they would be relieving or at adjoining schools which would make possible boundary adjustments for better facility utilization: one is State School J1, intended to relieve Fairlawn, Kinloch and Auburndale Elementary Schools; the other is State School I1, intended to relieve Citrus Grove Middle, Shenandoah and Riverside Elementary Schools.;
4. Funding for the International Studies Senior High School was increased to include acquisition of a site or existing building, since the Board-issued Request for Proposals did not yield a cost effective proposal.

Regional Center V:

1. State School W1, an elementary school proposed to be located adjacent to Lamar Louise Curry Middle School will now relieve Jane Roberts K-8 and Bowman Foster Ashe Elementary School, as well as capture projected student enrollment growth resulting from on-going residential development in the immediate area. Proposed funding years have not changed;
2. State School G1 has been converted from a K-8 center to an elementary school to be located adjacent to State School UU1 (a new middle school). S/S G1 is intended to relieve Joe Hall, Royal Green, Greenglade and Ethel Koger Beckham Elementary Schools, as well as capture projected student enrollment growth resulting from on-going residential development in the immediate area. Proposed funding has been advanced from 09-10 to 07-08 for design and 08-09 for construction;
3. Conversion of the JRE Lee Alternative Education facility to an elementary school has been deferred by one year in order to allow for the construction of a new alternative education facility elsewhere in the county;
4. Construction funding for State School JJ1, a proposed middle school reliever for Palmetto and Southwood Middle Schools has been delayed by one year to allow for the purchase of a site or a trade with Miami-Dade County for the School Board owned Ron Ehmann Park site;
5. Funding has been included for design in 06-07 and construction the following year for the partial replacement of Southwest Miami Senior High School.

Regional Center VI:

1. Funding for design and construction, respectively, of a replacement school for Ammons Middle was advanced to FY 06-07 and 07-08, respectively;
2. Funding for design and construction of a replacement school for Cutler Ridge Middle was advanced to FY 07-08;
3. Funding for the relocation of Miami MacArthur South Senior High School to an alternate Board-owned site further south, was included in FY 06-07. Relocation of this facility will occur in tandem with the design and subsequent construction of a middle school and small senior high school at the current MacArthur South school site;
4. Based on anticipated future growth at the elementary level in the vicinity of Redondo and Avocado Elementary Schools, funding was included in FY 08-09 for an Early Childhood Center;

5. State School TTT was modified to provide for 2,000 student stations instead of the previously proposed 2,858 student stations, and to add an approximate 800-student station medical technologies high school in deep south Miami-Dade, at the soon to be vacated Homestead Hospital.

C. Projected School Openings – 2006 Through 2010

Perhaps the most effective way of demonstrating the impact of the on-going and proposed new school construction on the District’s objective to eliminate overcrowding, meet class size and eliminate portables is to review the number of new seats projected to open over the next five school years starting in 2006. As illustrated in the tables that follow, approximately forty (40) new schools at all levels will open their doors to new incoming classes over the upcoming five-year period, an unprecedented event in the District’s history. As summarized below by year, starting with the projected 2006 school opening through and including school opening 2010, an estimated 100,000 new seats, including replacement seats, will be delivered. It is anticipated that at the conclusion of this effort, all overcrowding will have been eradicated, all portable units will have been removed and class size fully met.

**Table 18. Snapshot of School Openings
2006 Through 2010**

| Projected Number of Seats | School Opening | | | | |
|---------------------------|----------------|--------|--------|--------|--------|
| | 2006 | 2007 | 2008 | 2009 | 2010 |
| | 21,904 | 18,739 | 30,436 | 20,081 | 12,916 |

Note: Additional detailed information follows on the projects comprising the total number of seats for each school opening year.

| 2006 SCHOOL OPENINGS | STUDENT STATIONS |
|--|-------------------------|
| Dr. Edward L. Whigham ES | 280 |
| Jane Roberts K-8 Center | 154 |
| Highland Oaks Middle Relief School-Leased Facility | 674 |
| Miami Coral Park SHS | 1,658 |
| South Miami SHS | 900 |
| David Lawrence Jr. K-8 Center (S/S "QQ1") | 1,593 |
| Linda Lentin K-8 Center | 515 |
| William H. Turner Technical | 30 |
| Hialeah ES | 218 |
| Miami Norland SHS | 220 |
| Young Womens Academy | 450 |
| George T. Baker Aviation | 40 |
| Norma Butler Bossard ES - S/S "Y1" - Gilbert Porter ES / Jack Gordon ES Relief | 1,068 |
| Citrus Grove MS | 711 |
| Ronald W. Reagan/Doral SHS | 2,000 |
| Ernest R Graham ES | 502 |
| North County ES | 176 |
| Palm Lakes ES | 506 |
| Palm Springs ES | 308 |
| Hibiscus ES | 176 |
| John F. Kennedy MS | 466 |
| Scott Lake ES | 220 |
| John I. Smith ES | 352 |
| Rockway MS | 676 |
| South Hialeah ES | 636 |
| Henry M. Flagler ES | 505 |
| Kensington Park ES | 524 |
| Shenandoah ES | 437 |
| Coral Reef ES | 440 |
| Coral Terrace ES | 204 |
| Howard Drive ES | 204 |
| John A Ferguson SHS | 850 |
| Miami Palmetto SHS | 600 |
| Perrine ES | 220 |
| Pinecrest ES | 480 |
| South Miami ES | 550 |
| William Lehman ES | 242 |
| Centennial MS | 770 |
| Coral Reef SHS | 600 |
| Winston Park ES | 617 |
| Miami Lakes ES | 132 |
| TOTALS: | 21,904 |

| 2007 SCHOOL OPENINGS | STUDENT STATIONS |
|--|-------------------------|
| Kinloch Park ES | 418 |
| Frank C. Martin ES | 675 |
| Miami Killian SHS | 875 |
| Southwest Miami SHS | 874 |
| Country Club MS | 1,662 |
| Eugenia B. Thomas ES | 532 |
| Jorge Mas Canosa MS - S/S "YY1" | 2,232 |
| Redland/Hammocks/Ammons/Richmond Heights MS Relief | |
| Early Childhood Center 1 (Proj #00170000)(01) | 396 |
| Early Childhood Center 2 (Proj #00170100) | 396 |
| Early Childhood Center 3 (Proj #00170200) | 306 |
| S/S "U-1" | 1,239 |
| S/S "V-1" | 1,239 |
| S/S A1 | 826 |
| S/S "SS1" New Middle School - Redland MS / Homestead Middle Relief | 1,662 |
| Miami Lakes ES | 738 |
| Devon Aire ES | 783 |
| Miami Central SHS | 1,100 |
| Ponce De Leon MS | 264 |
| Mae Walters ES | 366 |
| Holmes ES | 573 |
| Miami Springs MS | 484 |
| Sunset ES | 400 |
| Skyway ES | 42 |
| North Hialeah ES | 44 |
| Palm Springs North ES | 62 |
| Treasure Island ES | 551 |
| TOTALS : | 18,739 |

| 2008 SCHOOL OPENINGS | STUDENT STATIONS |
|---|-------------------------|
| Young Men's Preparatory Academy @ Buena Vista Complex | 450 |
| Ojus ES | 538 |
| Ruth K Broad/Bay Harbor ES K8 Conversion | 551 |
| S/S BB1 | 1,624 |
| S/S "MM1" | 1,666 |
| S/S "D" | 1,642 |
| S/S "PP1" | 1,396 |
| Liberty City Replacement | 300 |
| S/S "UU-1" | 1,660 |
| S/S "CC1" Palm Glades K-8 | 1,642 |
| S/S "DD1" | 1,642 |
| S/S "WWW" Miami Springs SHS Relief | 1,964 |
| English Center | 600 |
| Miami Jackson SHS | 2,565 |
| S/S "HH1" K-8 Center | 2,120 |
| S/S "G1" (Springview EL Relief) | 826 |
| S/S "I1" | 826 |
| S/S "J1" | 826 |
| Madie Ives Community ES | 948 |
| S/S "QQQ1" New Senior High School Michael Krop SHS / North Miami Beach Sr. Relief | 1,593 |
| North Miami SHS | 3,661 |
| Treasure Island ES | 72 |
| S/S "P1" | 1,221 |
| S/S "JJJ" Barbara Goleman-SHS Relief | 2,844 |
| S/S E1 and North Miami Middle School Replacement | 2,000 |
| TOTALS : | 35,177 |

| 2009 SCHOOL OPENINGS | STUDENT STATIONS |
|-----------------------------|-------------------------|
| S/S "L1" | 826 |
| South Dade SHS | 3,641 |
| S/S "M1" | 826 |
| S/S "JJJ1" | 500 |
| Miami Beach SHS | 2,500 |
| S/S "K1" | 1,221 |
| Miami Carol City SHS | 3,647 |
| S/S "JJ1" | 1,241 |
| S/S "W1" | 826 |
| Early Childhood Center 4 | 396 |
| North Twin Lakes ES | 1,239 |
| JRE Lee Educational Center | 325 |
| S/S CC2 | 1,241 |
| S/S YYY1 | 1,600 |
| TOTALS : | 20,029 |

| 2010 SCHOOLS OPENINGS | STUDENT STATIONS |
|---|------------------|
| Miami Douglas MacArthur North | 500 |
| S/S "TT1" | 2,120 |
| S/S "TTT" | 2,858 |
| S/S "D1" New Elementary School - Greynolds Park El / Sabal Palm El Relief | 280 |
| S/S "HHH1" | 2,858 |
| Dr. Michael M. Krop SHS | 1,500 |
| FMU Collaborative High School | 800 |
| S/S "GGG1" | 2,000 |
| TOTAL: | 12,916 |

D. Existing Facilities – New Initiatives

In addition to continuing efforts to systematically improve the current inventory, the Office of School Facilities proposes to take on two new initiatives. The first is a 30-month implementation program to address and cure known indoor air quality issues in the District's existing facilities. While currently addressed on a case by case basis, a more focused and comprehensive approach is required to not only control and improve air quality but to keep it in check as facilities age and conditions change. The second initiative, ADA compliance, while not new to the District merits a more intensive and focused approach than that afforded by small yearly expenditures. Again, a 30-month implementation program will be developed, at the conclusion of which, known ADA deficiencies in existing facilities will have been fully addressed.

**FIVE YEAR CAPITAL PLAN FOR FISCAL YEARS 2006 TO 2010
NEW CAPACITY PROJECTS - REGION I**

| R e g i o n | School Name | Schools to Be Relieved | Seats | Fiscal Year | | | | |
|----------------------------|--|--|--------------|-----------------------|-----------------------|----------------------|----------------------|-------------|
| | | | | FY 06-07 | FY 07-08 | FY 08-09 | FY 09-10 | FY10-11 |
| I | Miami Lakes El. K-8 Conv. | Miami Lakes Mid. | 738 | \$ 17,100,000 | | | | |
| I | S/S "MM1" | Marti MS / Milam K-8 / Filer MS / Hialeah MA / Palm Springs MS | 1666 | \$ 39,205,970 | \$ - | \$ - | \$ - | \$ - |
| I | New Modular @ Mae Walters El. | Mae Walters ES / Meadowlane ES | 366 | | \$ 6,000,000 | | \$ - | \$ - |
| I | K-8 Ctr. At MacArthur | Hialeah Gardens ES / E. R. Graham ES / B. Graham Educ. / Miami Lakes MS | 1594 | \$ - | \$1,292,494 | \$41,246,926 | \$ - | \$ - |
| I | New Region 1 HS | - American SHS / Goleman SHS | 2850 | \$ - | \$ - | \$6,645,630 | \$82,940,586 | \$ - |
| I | S/S "LLL" - Miami Carol City Sr Replacement Phase I | Carol City SHS / American SHS | 3640 | \$ 3,000,000 | \$89,250,000 | \$ - | \$ - | \$ - |
| I | S/S "LLL" - Phase II | Carol City SHS / American SHS | 3640 | \$ 15,000,000 | | \$ - | \$ - | \$ - |
| I | North Twin Lakes El. Replacement | North Twin Lakes ES / Dupuis ES / Twin Lakes / Milam K-8 | 1239 | \$ 1,000,000.00 | \$ 26,063,310 | \$ - | \$ - | \$ - |
| I | Miami Douglas MacArthur North Sr. Replacement | Miami Douglas MacArthur North Sr. | 300 | | \$ 6,606,300 | \$ - | \$ - | \$ - |
| I | FMU Collaborative Project | | 750 | \$ 1,800,000 | \$ - | \$ - | \$ - | \$ - |
| I | New Modular | Bright/Johnson El. | 186 | \$ - | \$ 2,698,302 | \$ - | \$ - | \$ - |
| I | New Modular | Lake Stevens El. | 400 | | \$ 5,843,200 | \$ - | \$ - | \$ - |
| I | New Modular | Dupuis El. | 300 | | \$ 4,359,322 | \$ - | \$ - | \$ - |
| I | S/S "JJJ" | Barbara Goleman Sr | 2858 | \$ 116,353,122 | | | | |
| | TOTAL REGION I | | 20527 | \$ 193,459,092 | \$ 142,112,928 | \$ 47,892,556 | \$ 82,940,586 | \$ - |

**FIVE YEAR CAPITAL PLAN FOR FISCAL YEARS 2006 TO 2010
NEW CAPACITY PROJECTS - REGION II**

| R e g i o n | School Name | Schools to Be Relieved | Seats | Fiscal Year | | | | |
|----------------------------|---------------------------------------|--|--------------|-----------------------|----------------------|-----------------------|---------------------|-------------|
| | | | | FY 06-07 | FY 07-08 | FY 08-09 | FY 09-10 | FY10-11 |
| II | New Modular | Treasure Is El. | 551 | | \$ 10,721,854 | \$ - | \$ - | \$ - |
| II | Krop Sr Addition | Krop SHS | 1500 | | \$42,943,750 | \$ - | \$ - | \$ - |
| II | Bay Harbor K-8 Conversion | Highland Oaks MS | 551 | \$ 11,339,261 | \$ - | \$ - | \$ - | \$ - |
| II | S/S PP1 Middle | Norland MS / J.F. Kennedy MS. | 1396 | \$ 26,116,015 | \$ - | \$ - | \$ - | \$ - |
| II | S/S C1 | Biscayne ES / North Beach ES | 826 | \$ - | \$ - | \$ - | \$1,200,000 | \$ - |
| II | S/S D1 | New El - Greynolds Pk ES / Sabal Palm ES | 826 | | \$14,906,185 | \$ - | \$ - | \$ - |
| II | S/S E-1 | New El and New Mid - Biscayne Gardens ES / North Miami ES / Oak Grove ES/North Miami Mid | 2000 | \$ 36,860,000 | \$0 | \$ - | \$ - | \$ - |
| II | S/S QQQ | Krop SHS/ N Miami Beach SHS | 1560 | | \$0 | \$ 42,185,946 | \$ - | \$ - |
| II | ECC | VB Highland Oaks ES / Madie Ives | 396 | \$ - | \$ - | \$6,860,884 | \$ - | \$ - |
| II | S/S D K-8 | VB Highland Oaks ES /MS, Madie Ives ES | 1642 | \$ 41,104,105 | \$ - | \$ - | \$ - | \$ - |
| II | S/S BB1 K-8 | RB Bay Harbor ES /VB Highland Oaks MS | 1600 | \$ 33,848,220 | \$ - | \$ - | \$ - | \$ - |
| II | Madie Ives El. K-8 Conversion | Highland Oaks MS | 948 | \$ 21,072,073 | \$ - | \$ - | \$ - | \$ - |
| II | Miami Norland SHS Replacement | Miami Norland SHS | 2500 | \$ - | \$ 2,500,000 | \$ 66,371,875 | \$ - | \$ - |
| II | S/S BBB-1 North Miami Sr. Replacement | North Miami SHS | 3600 | \$ - | \$ - | \$ 90,661,493 | \$ - | \$ - |
| II | New Modular | Parkway El | 154 | \$ - | \$ 2,763,723 | \$ - | \$ - | \$ - |
| | TOTAL REGION II | | 20050 | \$ 170,339,674 | \$ 73,835,512 | \$ 206,080,198 | \$ 1,200,000 | \$ - |

**FIVE YEAR CAPITAL PLAN FOR FISCAL YEARS 2006 TO 2010
NEW CAPACITY PROJECTS - REGION III**

| R e g i o n | School Name | Schools to Be Relieved | Seats | Fiscal Year | | | | |
|----------------------------|---|---|-------------|-----------------------|----------------------|----------------------|----------------------|-------------|
| | | | | FY 06-07 | FY 07-08 | FY 08-09 | FY 09-10 | FY10-11 |
| III | New Modular | Miami Springs MS | 484 | | \$ 7,990,840 | \$ - | \$ - | \$ - |
| III | Miami Central Sr Renovations | Miami Central SHS | NA | \$ 64,118,136 | \$ - | \$ - | \$ - | \$ - |
| III | S/S F-1 | Hadley / Stirrup / Coral / Park / Sweetwater ES | 826 | \$ 1,000,000 | \$ 14,964,023 | \$ - | \$ - | \$ - |
| III | New EI at Banyan | Banyan ES / Everglades K-8 | 826 | \$ - | \$ - | \$ 1,500,000 | \$ 12,337,638 | \$ - |
| III | S/S HH1 - K-8 (Includes site Acquisition) | Jl Smith ES / EB Thomas / ES / Doral MS | 2120 | \$ 63,860,150 | \$ - | \$ - | \$ - | \$ - |
| III | S/S P1(WW1) | Jl Smith ES / EB Thomas - Site Acquisition | 1221 | \$ 10,000,000 | \$ 2,000,000 | \$ 18,787,526 | \$ - | \$ - |
| III | S/S GGG-1 | Doral SHS / Miami Coral / Park SHS / Braddock SHS | 2000 | \$ 19,000,000 | \$ 54,972,500 | \$ - | \$ - | \$ - |
| III | Holmes EI Partial Replacement | Holmes EI | 440 | \$ 19,729,868 | \$ - | \$ - | \$ - | \$ - |
| III | Liberty City EI Partial Replacement | Liberty City EI | 300 | \$ 4,630,655 | \$ - | \$ - | \$ - | \$ - |
| III | New Modular | Springview EI | 242 | | \$ 4,388,368 | \$ - | \$ - | \$ - |
| III | New Modular | Miami Springs EI | 186 | | \$ 3,372,878 | \$ - | \$ - | \$ - |
| III | New Modular | Everglades K8 | 186 | | \$ 3,372,878 | \$ - | \$ - | \$ - |
| | TOTAL REGION III | | 8831 | \$ 182,338,809 | \$ 91,061,487 | \$ 20,287,526 | \$ 12,337,638 | \$ - |

**FIVE YEAR CAPITAL PLAN FOR FISCAL YEARS 2006 TO 2010
NEW CAPACITY PROJECTS - REGION IV**

| R e g i o n | School Name | Schools to Be Relieved | Seats | Fiscal Year | | | | |
|----------------------------|--|--|--------------|----------------------|----------------------|----------------------|----------------------|----------------------|
| | | | | FY 06-07 | FY 07-08 | FY 08-09 | FY 09-10 | FY10-11 |
| IV | Miami Senior Addition | Miami Senior | 1000 | \$ 10,000,000 | \$ 5,000,000 | \$ 73,032,188 | \$ - | \$ - |
| IV | S/S I-1 | Shenandoah / Citrus Grove / Riverside ES | 826 | \$ - | \$ 4,500,000 | \$ 1,200,000 | \$ 13,249,401 | \$ - |
| IV | S/S J-1 | Fairlawn / Kinloch/ Aurbundale | 826 | \$ - | \$ - | \$ 4,500,000 | \$ 1,200,000 | \$ 13,249,401 |
| IV | S/S L1- New K-8 @ EnglishCenter | Silverbluff ES, Carver /Coral Gables ES | 1624 | \$ 350,000 | \$ 33,764,990 | \$ - | \$ - | \$ - |
| IV | New Modular | Sunset ES | 400 | \$ 500,000 | \$ 7,811,000 | \$ - | \$ - | \$ - |
| IV | S/S "GG1" | Jose de Diego MS | 1241 | | \$ 2,300,000 | \$ - | \$ - | \$ - |
| IV | Int Studies Senior at Metrorail | Coral Gables SHS | 700 | \$ 16,000,000 | \$ 15,041,310 | \$ - | \$ - | \$ - |
| IV | s/s "JJJ-1" | New High School for Building Trades | 500 | | \$ 5,000,000 | \$ - | \$ - | \$ - |
| IV | Auburndale EI Partial Replacement | Auburndale ES | NA | \$ - | \$ - | \$ - | \$100,000 | \$1,179,600 |
| IV | Citrus Grove Occupational Replacement | Citrus Grove Occupational | NA | \$ - | \$ - | \$ - | \$500,000 | \$5,000,000 |
| IV | Addition @ Southside EI | Coral Way / Silverbluff / Southside ES | 270 | | \$ 13,957,526 | \$ - | \$ - | \$ - |
| IV | English Center - English Center / Adult Ed | | 600 | \$ 13,325,000 | | \$ - | \$ - | \$ - |
| IV | Miami Shores EI Addition and Restoration | Miami Shores EI | 200 | | \$ 500,000 | \$ - | \$ - | \$ - |
| IV | Shadowlawn EI Replacement | Shadowlawn ES | 400 | \$ - | \$ - | \$ - | \$ 750,000 | \$ 6,371,600 |
| IV | Young Men's Academy | | 450 | \$ 5,000,000 | \$ - | \$ - | \$ - | \$ - |
| IV | Law Enforcement, Forensic Studies Senior High School | | 500 | \$ 1,000,000 | \$ 10,092,500 | \$ - | \$ - | \$ - |
| IV | Medical Technologies High School | | 500 | \$ - | \$ - | \$ 1,000,000 | \$ 10,092,500 | \$ - |
| IV | Museum of Science High School | | 450 | \$ - | \$ - | \$ - | \$ - | \$ 10,714,050 |
| | TOTAL REGION IV | | 10487 | \$ 46,175,000 | \$ 97,967,326 | \$ 79,732,188 | \$ 25,891,901 | \$ 36,514,651 |

**FIVE YEAR CAPITAL PLAN FOR FISCAL YEARS 2006 TO 2010
NEW CAPACITY PROJECTS - REGION V**

| R e g i o n | School Name | Schools to Be Relieved | Seats | Fiscal Year | | | | |
|----------------------------|--|---|--------------|----------------------|-----------------------|----------------------|-------------|-------------|
| | | | | FY 06-07 | FY 07-08 | FY 08-09 | FY 09-10 | FY10-11 |
| V | Devon Aire El K-8 Conversion | Arvida MS | 783 | \$17,837,626 | \$ - | \$ - | \$ - | \$ - |
| V | ECC -3 | Jane Roberts K-8/ Bowman Foster Ashe El. | 396 | \$8,755,834 | \$ - | \$ - | \$ - | \$ - |
| V | S/S W1 | New Elementary - Jane Roberts/Fascell/Ashe | 826 | \$1,000,000 | \$36,212,760 | \$ - | \$ - | \$ - |
| V | S/S G-1 | New Elementary - Hall/Beckham/Royal Green/Greenglade El | 1068 | \$ - | \$2,327,361 | \$20,946,248 | \$ - | \$ - |
| V | JRE Lee Conversion to Elementary | S Miami / Ludlam | 730 | \$ - | \$1,200,000 | \$13,186,875 | \$ - | \$ - |
| V | JRE Lee Relocation - Alternative Education | | 320 | \$750,000 | \$4,444,376 | \$ - | \$ - | \$ - |
| V | S/S JJ-1 | New Middle - Southwood MS / Palmetto MS | 1241 | \$8,000,000 | \$24,307,452 | \$ - | \$ - | \$ - |
| V | S/S YYY1 | Miami Palmetto SHS / Miami Killian SHS | 1600 | \$3,000,000 | \$39,950,400 | \$ - | \$ - | \$ - |
| V | S/S CC2 | Glades/ Arvida Mid/Kenwood K-8 | 1241 | \$1,800,000 | \$27,200,000 | \$ - | \$ - | \$ - |
| V | S/S UU-1 | Paul Bell/W.R. Thomas/ Lamar Curry Mid | 1660 | \$39,500,000 | \$ - | \$ - | \$ - | \$ - |
| V | Southwest Miami Senior Replacement | Southwest Miami Sr | 2300 | \$2,702,683 | \$60,813,750 | \$ - | \$ - | \$ - |
| | TOTAL REGION V | | 12165 | \$ 83,346,143 | \$ 196,456,099 | \$ 34,133,123 | \$ - | \$ - |

**FIVE YEAR CAPITAL PLAN FOR FISCAL YEARS 2006 TO 2010
NEW CAPACITY PROJECTS - REGION VI**

| R e g i o n | School Name | Schools to Be Relieved | Seats | Fiscal Year | | | | |
|----------------------------|--|---|--------------|-----------------------|-----------------------|----------------------|-------------|-------------|
| | | | | FY 06-07 | FY 07-08 | FY 08-09 | FY 09-10 | FY10-11 |
| VI | New Senior (FFF-1) UM District Collaboration - Math/Science 6-12 | | 1350 | \$ 3,000,000 | \$ 30,713,210 | \$ - | \$ - | \$ - |
| VI | S/S M1 | C Eve / Hoover / Kendall Lakes ES | 826 | \$ 4,200,000 | \$ 14,978,478 | \$ - | \$ - | \$ - |
| VI | New K8 (S/S TT1) - EFBD School | | 2327 | \$ - | \$ - | \$ 40,108,268 | \$ - | \$ - |
| VI | New K8 S/S DD1 | Leisure City K8/Peskoe /Chapman | 1642 | \$ 39,065,634 | \$ - | \$ - | \$ - | \$ - |
| VI | New K8 @ Palm Glade (S/S CC1) | Pine Villa/Redland ES/Redland MS | 1642 | \$ 36,111,279 | \$ - | \$ - | \$ - | \$ - |
| VI | New Senior (S/S TTT) | Homestead SHS | 2000 | \$ 57,000,000 | \$ - | \$ - | \$ - | \$ - |
| VI | Medical Technologies Senior High School | Homestead SHS | 800 | \$ 12,000,000 | | | | |
| VI | S/S HHH-1 | Felix Varela / Sunset /Miami Southridge SHS | 2858 | \$ 21,000,000 | \$ 89,407,500 | \$ - | \$ - | \$ - |
| VI | Ammons Mid Replacement | Ammons MS | 1300 | \$ 1,200,000 | \$ 30,800,000 | \$ - | \$ - | \$ - |
| VI | Cutler Ridge Mid Replacement | Cutler Ridge MS | 1642 | \$ - | \$ 30,800,000 | \$ - | \$ - | \$ - |
| VI | ECC | Avocado/Redondo El | 396 | \$ - | \$ - | \$ 9,500,000 | \$ - | \$ - |
| VI | MacArthur South Sr. Replacement | MacArthur SHS | 300 | \$ 7,603,300 | \$ - | \$ - | \$ - | \$ - |
| | TOTAL REGION VI | | 17083 | \$ 181,180,213 | \$ 196,699,188 | \$ 49,608,268 | \$ - | \$ - |

| | | | | | | |
|--------------------------|--------------|----------------------|----------------------|----------------------|----------------------|---------------------|
| TOTAL ALL REGIONS | 89143 | \$856,838,931 | \$798,132,540 | \$437,733,859 | \$122,370,125 | \$36,514,651 |
|--------------------------|--------------|----------------------|----------------------|----------------------|----------------------|---------------------|

FIVE YEAR CAPITAL PLAN FOR FISCAL YEARS 2006-2010

| PROJECT | REGION | FY 06-07 | FY 07-08 | FY 08-09 | FY 09-10 | FY10-11 |
|---|-----------------|--------------|--------------|--------------|--------------|---------|
| School Board Administration - Annex | Administrative | \$937,500 | \$937,500 | | | |
| School Board Administration - Garage | Administrative | \$275,000 | | | | |
| School Board Administration - Main Building | Administrative | \$1,875,000 | \$1,875,000 | | | |
| Region I | Administrative | | \$250,000 | | | |
| Region Center VI | Administrative | | \$122,050 | | | |
| Region Center V | Administrative | | \$218,495 | | | |
| Region Center IV | Administrative | \$68,544 | \$235,008 | | | |
| Region Center III | Administrative | | \$668,750 | | | |
| Region Center II | Administrative | | \$118,495 | | | |
| Corporate Academy North | Alt/ESE | \$988,226 | | | | |
| Neva King Cooper Education | Alt/ESE | \$250,000 | | | | |
| JRE Lee Educational Center | Alt/ESE | \$91,074 | | | | |
| Ruth Owens Kruse Education | Alt/ESE | | \$704,138 | | | |
| Robert Renick Education | Alt/ESE | | \$404,504 | \$1,290,930 | | |
| Miami Douglas MacArthur | Alt/ESE | \$377,000 | | \$39,343 | | |
| Merrick Educational Center | Alt/ESE | | \$781,166 | \$868,825 | \$3,475,302 | |
| Jan Mann Opportunity | Alt/ESE | | \$7,772 | | | |
| Dorothy M. Wallace - Cope South | Alt/ESE | | \$66,250 | | | |
| Anna Brenner Meyers Telecommunications | Ancillary | \$812,500 | \$812,500 | | | |
| Miami Skills Center | Ancillary | | \$41,000 | | | |
| Materials Control Center | Ancillary | \$17,703 | \$152,500 | | | |
| ITS Annex Warehouse (Records) | Ancillary | | \$250,250 | | | |
| Information Technology | Ancillary | \$102,090 | \$975,154 | | | |
| Food & Nutrition Center | Ancillary | \$38,840 | \$287,580 | | | |
| Nathaniel "Traz" Powel Fo | Auxiliary | \$2,200,000 | | | | |
| Chapman House | Auxiliary | | | | \$335,387 | |
| Security Improvements | Central Account | \$13,000,000 | \$10,000,000 | \$10,000,000 | \$10,000,000 | |
| Underground Storage Tank Removal | Central Account | | \$1,170,000 | | | |
| Maintenance Operations | | \$441,801 | | | | |
| Plant Operations | | \$131,370 | | | | |
| Transportation Northwest | | \$70,472 | | | | |
| Richard's Warehouse | | \$40,856 | | | | |
| M&O South | Maintenance | | \$57,480 | | | |
| M&O Plant Operations | Maintenance | | \$627,963 | \$263,203 | | |

FIVE YEAR CAPITAL PLAN FOR FISCAL YEARS 2006-2010

| PROJECT | REGION | FY 06-07 | FY 07-08 | FY 08-09 | FY 09-10 | FY10-11 |
|--------------------------------|-----------------|-------------|-------------|--------------|-------------|-----------|
| M&O North Central | Maintenance | | | \$473,766 | | |
| M&O Mill Annex | Maintenance | | | \$101,096 | | |
| Bunche Park ES | Region Center I | \$4,804,976 | | | | |
| Palm Lakes ES | Region Center I | | | \$1,314,922 | | |
| North Dade MS | Region Center I | \$2,000,000 | \$8,000,000 | | \$2,062,631 | |
| Barbara Hawkins ES | Region Center I | \$53,000 | | | \$1,062,444 | |
| Miami Gardens ES | Region Center I | \$1,417,300 | | | | |
| North Glade ES | Region Center I | \$969,106 | | | | |
| Flamingo ES | Region Center I | \$4,881,542 | | | | |
| Rainbow Park ES | Region Center I | \$713,691 | | | | |
| Palm Springs ES | Region Center I | \$275,000 | | | | \$500,000 |
| Meadowlane ES | Region Center I | \$500,000 | | | | \$500,000 |
| James H. Bright ES | Region Center I | \$711,250 | | | | |
| Jose Marti MS | Region Center I | \$350,000 | | | \$1,500,023 | |
| Miami Lakes Educational Center | Region Center I | \$3,985,760 | | | | |
| Amelia Earhart ES | Region Center I | \$4,385,184 | | | | |
| Hialeah MS | Region Center I | \$3,918,378 | | | | \$500,000 |
| Carol City MS | Region Center I | \$1,900,000 | | | | |
| Henry H. Filer MS | Region Center I | \$470,000 | \$2,655,723 | | | |
| Nathan Young ES | Region Center I | \$5,014,739 | | | | |
| Miami Lakes MS | Region Center I | \$375,000 | \$2,825,000 | | | |
| North Twin Lakes El. | Region Center I | \$450,000 | | | | |
| Twin Lakes ES | Region Center I | \$663,341 | | | | \$500,000 |
| Opa Locka ES | Region Center I | \$679,330 | \$3,623,095 | | | |
| Barbara Goleman SHS | Region Center I | \$668,096 | | | | |
| Hialeah-Miami Lakes SHS | Region Center I | \$550,110 | | \$1,965,612 | \$7,862,447 | |
| Joella C. Good ES | Region Center I | \$1,262,405 | \$3,113,845 | | | |
| Skyway ES | Region Center I | | | \$2,930,594 | | |
| Palm Springs MS | Region Center I | | | | \$62,150 | |
| Mae Walters ES | Region Center I | | \$968,750 | | | |
| M.A. Milam K-8 Center | Region Center I | | \$2,661,041 | \$10,644,166 | | |
| Lake Stevens ES | Region Center I | | | \$946,772 | \$5,139,748 | |
| J.W. Johnson ES | Region Center I | | | \$1,831,656 | | |
| Hialeah-Miami Lakes SHS | Region Center I | | \$656,140 | \$1,965,612 | \$7,862,447 | |
| Hialeah SHS | Region Center I | | | \$2,313,371 | \$9,253,466 | |
| Golden Glades ES | Region Center I | | \$156,250 | \$5,056,521 | | |

FIVE YEAR CAPITAL PLAN FOR FISCAL YEARS 2006-2010

| PROJECT | REGION | FY 06-07 | FY 07-08 | FY 08-09 | FY 09-10 | FY10-11 |
|-----------------------------------|------------------|-------------|-------------|-------------|-------------|-----------|
| Charles David Wyche, Jr. ES | Region Center I | | \$33,086 | | | |
| Carol City ES | Region Center I | | \$241,957 | | \$1,508,074 | |
| Brentwood ES | Region Center I | | \$156,250 | | | |
| Ben Sheppard ES | Region Center I | | \$225,000 | | \$1,840,275 | |
| Ben Sheppard PLC V | Region Center I | | | | | |
| Golden Glades ES | Region Center I | | | | | |
| Rainbow Park ES | Region Center I | | | | | |
| Crestview ES | Region Center II | \$3,901,108 | | \$1,540,859 | \$6,163,434 | |
| Scott Lake ES | Region Center II | \$713,220 | | \$1,065,522 | \$4,262,088 | |
| Gertrude Edelman/Sabal Palm ES | Region Center II | | | \$1,520,730 | \$6,082,922 | |
| Parkway ES | Region Center II | \$570,000 | | | | \$500,000 |
| Fulford ES | Region Center II | \$415,840 | | | | \$500,000 |
| Biscayne Gardens ES | Region Center II | \$800,000 | \$3,189,978 | | \$472,084 | |
| Norwood ES | Region Center II | \$978,016 | \$3,912,064 | | | |
| Norland ES | Region Center II | \$5,298,977 | | | | |
| Norland MS | Region Center II | \$7,051,705 | | | | |
| Greynolds Park ES | Region Center II | \$920,769 | | | \$111,804 | |
| North Beach ES | Region Center II | \$253,909 | | | | |
| Michael M. Krop SHS | Region Center II | \$1,943,750 | | | | |
| Miami Norland SHS | Region Center II | \$252,300 | | | | |
| John F. Kennedy MS | Region Center II | \$1,600,000 | \$6,400,000 | \$3,057,471 | | |
| Highland Oaks MS | Region Center II | \$688,390 | | | | |
| Natural Bridge ES | Region Center II | \$555,534 | | | | |
| Nautilus MS | Region Center II | \$1,175,000 | | \$1,842,095 | \$7,368,378 | |
| North Miami Beach SHS | Region Center II | \$1,103,740 | | \$2,000,000 | | |
| Gratigny ES | Region Center II | \$1,003,974 | | | | |
| Virginia A Boone/Highland Oaks ES | Region Center II | | \$375,000 | \$1,717,619 | \$6,870,475 | |
| Treasure Island ES | Region Center II | | \$1,606,948 | \$6,427,794 | | |
| Thomas Jefferson MS | Region Center II | | \$274,021 | | \$6,832,764 | |
| Ruth K Broad/Bay Harbor ES | Region Center II | | \$1,801,584 | \$7,206,337 | | |
| Parkway MS | Region Center II | | \$1,976,290 | \$7,905,158 | | |
| Parkview ES | Region Center II | | \$979,982 | \$5,269,899 | | |
| Oak Grove ES | Region Center II | \$248,940 | \$354,337 | | | |

FIVE YEAR CAPITAL PLAN FOR FISCAL YEARS 2006-2010

| PROJECT | REGION | FY 06-07 | FY 07-08 | FY 08-09 | FY 09-10 | FY10-11 |
|--|-------------------|-------------|-------------|-------------|-------------|---------|
| North Miami ES | Region Center II | | \$683,023 | \$8,988,799 | | |
| Myrtle Grove ES | Region Center II | | \$1,016,614 | \$4,147,209 | | |
| Miami Beach SHS | Region Center II | | \$500,000 | | | |
| Hubert O. Sibley ES | Region Center II | \$496,000 | | | | |
| Hibiscus ES | Region Center II | | | | \$334,796 | |
| Fienberg-Fisher Adult & Comm Ed | Region Center II | | \$163,152 | | | |
| Biscayne ES | Region Center II | | | | \$1,438,880 | |
| Earlington Heights ES | Region Center III | \$1,660,584 | | \$1,229,221 | \$4,916,884 | |
| Martin Luther King ES | Region Center III | \$2,580,200 | | | | |
| Dr. Henry W. Mack/West Little River ES | Region Center III | \$6,051,406 | | | | |
| Miami Coral Park SHS | Region Center III | | | | \$2,938,183 | |
| Rockway MS | Region Center III | \$100,000 | | | \$1,865,000 | |
| Lakeview ES | Region Center III | \$869,588 | \$4,347,941 | | | |
| Broadmoor ES | Region Center III | \$134,999 | | | \$127,727 | |
| Madison MS | Region Center III | \$1,587,261 | \$6,349,046 | | | |
| Miami Park ES | Region Center III | \$8,163,831 | | | | |
| Miami Park ES | Region Center III | \$7,613,831 | | | | |
| Everglades K-8 Center | Region Center III | \$917,000 | | | \$6,986,606 | |
| Everglades K-8 Center | Region Center III | \$400,000 | | | | |
| Miami Springs ES | Region Center III | \$151,000 | | | | |
| Arcola Lake ES | Region Center III | \$309,750 | | | | |
| Van E. Blanton ES | Region Center III | \$365,816 | | | | |
| William H. Turner Technical | Region Center III | | | | \$4,825,189 | |
| Westview MS | Region Center III | | \$1,761,545 | | | |
| Sweetwater ES | Region Center III | | | | \$581,221 | |
| Springview ES | Region Center III | | \$1,441,657 | \$5,766,627 | | |
| Seminole ES | Region Center III | | \$250,000 | \$1,387,174 | \$5,548,694 | |
| Ruben Dario MS | Region Center III | \$550,000 | \$1,000,000 | | \$1,579,920 | |
| Rockway ES | Region Center III | \$275,000 | \$275,000 | | \$1,155,745 | |
| Poinciana Park ES | Region Center III | | | \$1,786,060 | \$7,142,242 | |
| Olinda ES | Region Center III | \$245,000 | | | | |
| Miami Springs SHS | Region Center III | | | | \$4,879,498 | |

FIVE YEAR CAPITAL PLAN FOR FISCAL YEARS 2006-2010

| PROJECT | REGION | FY 06-07 | FY 07-08 | FY 08-09 | FY 09-10 | FY10-11 |
|---------------------------|-------------------|-------------|--------------|--------------|-------------|-------------|
| Miami Springs MS | Region Center III | | \$2,280,503 | | \$1,732,149 | |
| Miami Northwestern SHS | Region Center III | | \$7,420,232 | | | |
| Lillie C. Evans ES | Region Center III | \$275,000 | | | \$5,600,358 | |
| Hialeah ES | Region Center III | | | | \$1,016,525 | |
| Eugenia B. Thomas ES | Region Center III | \$600,000 | | | | |
| E.W.F. Stirrup ES | Region Center III | | | | \$4,708,974 | |
| Design & Architecture SHS | Region Center III | | \$295,000 | | | |
| D A Dorsey Educational | Region Center III | | \$500,000 | | | |
| Coral Park ES | Region Center III | | \$1,008,000 | | | \$1,058,882 |
| Charles R. Drew MS | Region Center III | | \$1,069,240 | \$4,276,958 | | |
| Brownsville MS | Region Center III | | \$2,048,036 | \$8,192,142 | | |
| Frederick Douglass ES | Region Center IV | \$461,758 | | | | \$1,154,373 |
| Thena C. Crowder ES | Region Center IV | \$4,093,881 | | | | |
| Morningside ES | Region Center IV | \$5,516,644 | | | | |
| Kensington Park ES | Region Center IV | \$2,736,925 | | | | \$1,439,189 |
| Shenandoah MS | Region Center IV | \$2,077,494 | | \$2,334,267 | \$9,337,067 | |
| Sunset ES | Region Center IV | \$1,859,731 | \$12,259,101 | | | |
| Coral Gables ES | Region Center IV | \$206,735 | | | | |
| Riverside ES | Region Center IV | | | | | \$1,306,708 |
| Coral Gables SHS | Region Center IV | \$3,873,890 | | | | \$3,391,491 |
| Toussaint L'Ouverture ES | Region Center IV | \$2,662,069 | | | | |
| Lindsey Hopkins Technical | Region Center IV | \$365,642 | | | | \$4,231,218 |
| Santa Clara ES | Region Center IV | \$2,821,143 | | | | |
| Phillis Wheatley ES | Region Center IV | \$300,000 | \$1,016,916 | \$5,267,633 | | |
| West Laboratory ES | Region Center IV | \$798,120 | | \$1,187,038 | \$4,748,150 | |
| Horace Mann MS | Region Center IV | \$50,000 | \$2,238,257 | \$12,683,456 | | |
| Miami Shores ES | Region Center IV | \$250,000 | | | | |
| Miami Edison SHS | Region Center IV | \$2,054,614 | \$8,215,456 | | | |
| Southside ES | Region Center IV | \$369,500 | | | | |
| Silver Bluff ES | Region Center IV | | | \$1,405,844 | \$5,623,377 | |
| Shenandoah ES | Region Center IV | | | | | \$6,418,991 |
| Ponce De Leon MS | Region Center IV | | \$300,000 | | | \$2,425,280 |
| Miami Edison MS | Region Center IV | | \$2,512,183 | | | |
| Little River ES | Region Center IV | | \$3,325,289 | | | |

FIVE YEAR CAPITAL PLAN FOR FISCAL YEARS 2006-2010

| PROJECT | REGION | FY 06-07 | FY 07-08 | FY 08-09 | FY 09-10 | FY10-11 |
|----------------------------|------------------|-------------|--------------|-------------|-------------|-------------|
| Lenora B. Smith ES | Region Center IV | | \$1,791,009 | \$7,164,038 | | |
| Kinloch Park MS | Region Center IV | | | \$1,780,403 | \$7,121,610 | |
| Key Biscayne ES/MS | Region Center IV | | \$1,204,794 | | | \$1,217,421 |
| Kensington Park ES - PLC D | Region Center IV | | | | | \$579,458 |
| Jose de Diego MS | Region Center IV | | \$3,564,564 | | | |
| Henry M. Flagler ES | Region Center IV | | | | | \$1,077,096 |
| George Washington Carver | Region Center IV | | \$526,593 | | | \$6,982,314 |
| George Washington Carver | Region Center IV | | \$1,090,052 | \$3,584,006 | | |
| Frances S. Tucker ES | Region Center IV | | \$17,748 | \$1,329,803 | \$5,319,212 | |
| Fairlawn ES | Region Center IV | | | \$1,132,959 | \$4,531,838 | |
| Edison Park ES | Region Center IV | | \$1,567,396 | \$6,269,585 | | |
| Coral Way ES | Region Center IV | | | | \$1,507,695 | \$1,507,695 |
| Comstock ES | Region Center IV | | \$2,290,218 | \$8,705,443 | | |
| Coconut Grove ES | Region Center IV | | \$1,326,024 | \$5,362,154 | | |
| Citrus Grove ES | Region Center IV | | \$519,026 | | | \$1,520,359 |
| Booker T. Washington SHS | Region Center IV | | \$1,582,187 | \$1,312,591 | \$5,250,363 | |
| Auburndale ES | Region Center IV | | \$100,000 | \$1,749,903 | \$6,997,214 | |
| Allapattah MS | Region Center IV | | \$1,227,936 | \$2,018,766 | \$8,075,064 | |
| Palmetto ES | Region Center V | \$728,392 | | \$1,748,876 | \$6,995,502 | |
| Howard Drive ES | Region Center V | \$528,555 | | \$1,811,819 | \$7,247,278 | |
| Perrine ES | Region Center V | \$1,032,890 | | \$1,264,758 | \$5,059,033 | |
| Colonial Drive ES | Region Center V | \$498,596 | | \$1,182,875 | \$4,731,499 | |
| Olympia Heights ES | Region Center V | \$625,000 | | | | \$5,121,721 |
| Ludlam ES | Region Center V | \$1,380,425 | | | | |
| West Miami MS | Region Center V | \$1,823,084 | \$437,000 | \$2,084,709 | \$8,238,837 | |
| Palmetto MS | Region Center V | \$49,164 | | | \$7,482,083 | |
| Jane Roberts K-8 Center | Region Center V | \$2,203,563 | | \$1,448,833 | \$7,099,282 | |
| Devon Aire ES | Region Center V | \$5,437,356 | | | | |
| Miami Killian SHS | Region Center V | \$2,000,000 | \$16,809,456 | | | |
| Zora Neale Hurston ES | Region Center V | | \$8,475 | \$450,034 | | |
| Miami Palmetto SHS | Region Center V | \$957,757 | \$8,831,027 | | | |
| Wesley Matthews ES | Region Center V | | | \$25,042 | \$19,346 | |
| Joe Hall ES | Region Center V | \$1,818,750 | | | | |

FIVE YEAR CAPITAL PLAN FOR FISCAL YEARS 2006-2010

| PROJECT | REGION | FY 06-07 | FY 07-08 | FY 08-09 | FY 09-10 | FY10-11 |
|-------------------------------------|-----------------|-------------|-------------|-------------|-------------|---------|
| Marjory Stoneman Douglas ES | Region Center V | \$902,760 | | \$1,029,092 | \$3,451,943 | |
| G. Holmes Braddock SHS | Region Center V | \$4,160,970 | \$1,213,470 | | \$3,283,647 | |
| South Miami SHS | Region Center V | \$300,000 | \$620,264 | | \$3,716,865 | |
| William Lehman ES | Region Center V | | \$3,037,060 | | | |
| W. R. Thomas MS | Region Center V | | \$968,880 | \$319,316 | \$1,870,485 | |
| Vineland ES | Region Center V | | | \$38,559 | \$5,298,036 | |
| Village Green ES | Region Center V | | | \$21,633 | | |
| Tropical ES | Region Center V | | | \$51,774 | \$4,529,974 | |
| Sylvania Heights ES | Region Center V | | | \$1,367,552 | \$5,470,206 | |
| Sunset Park ES | Region Center V | | \$705,900 | | | |
| Southwood MS | Region Center V | | \$790,808 | | | |
| Southwest Miami SHS | Region Center V | \$1,000,000 | | | | |
| South Miami MS | Region Center V | | | | \$1,177,844 | |
| South Miami ES | Region Center V | | | \$4,659,714 | | |
| Riviera MS | Region Center V | | | \$2,216,252 | \$8,865,007 | |
| Pinecrest ES | Region Center V | | | \$1,309,314 | \$5,237,255 | |
| Paul W. Bell MS | Region Center V | \$500,000 | | | \$10,087 | |
| Marjory Stoneman Douglas ES - PLC F | Region Center V | | | | \$1,256,418 | |
| Leewood ES | Region Center V | | | | \$4,716,195 | |
| Kenwood K-8 Center | Region Center V | | \$32,508 | \$1,172,040 | \$4,688,162 | |
| Kendale ES | Region Center V | | | \$1,259,976 | \$5,039,904 | |
| Howard D. McMillan MS | Region Center V | | | \$955,825 | \$3,823,301 | |
| Howard A. Doolin MS | Region Center V | | | | \$4,989,006 | |
| Greenglade ES | Region Center V | \$250,000 | \$98,730 | \$1,011,636 | \$4,046,543 | |
| Gloria Floyd ES | Region Center V | \$410,109 | \$102,527 | \$1,051,584 | \$4,206,334 | |
| Glades MS | Region Center V | \$604,000 | \$39,679 | \$1,581,154 | \$6,324,615 | |
| G. Holmes Braddock SHS | Region Center V | | \$1,213,470 | | | |
| Frank C. Martin ES | Region Center V | | | \$1,718,238 | \$6,872,954 | |
| Flagami ES | Region Center V | | | \$1,083,799 | \$4,335,195 | |
| Ethel Koger Beckham ES | Region Center V | | \$350,000 | | | |
| Ethel F. Beckford/Richmond | Region Center V | | \$43,398 | | | |
| Emerson ES | Region Center V | | | \$1,798,092 | \$7,192,368 | |

FIVE YEAR CAPITAL PLAN FOR FISCAL YEARS 2006-2010

| PROJECT | REGION | FY 06-07 | FY 07-08 | FY 08-09 | FY 09-10 | FY10-11 |
|-----------------------------------|------------------|-------------|-------------|-------------|-------------|-------------|
| Dr. Bowman Foster Ashe ES | Region Center V | | \$1,078,872 | | | \$1,151,272 |
| David Fairchild ES | Region Center V | | | | \$995,148 | \$995,148 |
| Cypress ES | Region Center V | \$232,120 | | | | |
| Coral Terrace ES | Region Center V | \$205,607 | | | | |
| Blue Lakes ES | Region Center V | | | \$1,013,184 | | |
| Arvida MS | Region Center V | \$250,000 | \$1,350,000 | | | \$2,421,162 |
| William A. Chapman ES | Region Center VI | \$243,750 | | \$1,609,224 | \$6,436,894 | |
| Jack D. Gordon ES - PLC S | Region Center VI | | | | | \$1,533,649 |
| Redland MS | Region Center VI | \$350,000 | | \$2,685,621 | | |
| Homestead MS | Region Center VI | \$707,224 | | \$2,399,037 | \$9,596,149 | |
| Miami Heights ES | Region Center VI | \$1,471,766 | | | | |
| Pine Villa ES | Region Center VI | | | | | \$2,000,000 |
| Redland ES | Region Center VI | | | \$1,330,467 | \$5,321,866 | |
| Laura C. Saunders ES | Region Center VI | \$3,385,909 | | | | |
| Redondo ES | Region Center VI | \$1,202,070 | | | | |
| Hammocks MS | Region Center VI | \$1,217,147 | | | | \$2,001,234 |
| Miami Sunset SHS | Region Center VI | \$7,889,674 | | | | |
| Richmond Heights MS | Region Center VI | \$1,218,683 | | | | \$4,000,000 |
| Jack D. Gordon ES | Region Center VI | | | | | \$5,060,553 |
| Robert Morgan Educational Center | Region Center VI | \$2,000,000 | | | | \$1,000,000 |
| Jack D. Gordon ES - PLC T | Region Center VI | | | | \$489,682 | |
| Miami Southridge SHS | Region Center VI | \$1,431,625 | | | | \$500,000 |
| Coral Reef SHS | Region Center VI | \$263,028 | | | | \$2,000,000 |
| Centennial MS | Region Center VI | \$1,200,000 | | | | |
| South Dade Adult Education Center | Region Center VI | \$100,000 | | | | |
| West Homestead ES | Region Center VI | \$100,000 | | \$1,194,219 | \$1,776,878 | |
| Homestead SHS | Region Center VI | \$671,750 | \$350,000 | \$2,759,903 | | |
| Irving & Beatrice Peskoe ES | Region Center VI | \$175,000 | | | | |
| Leisure City K-8 Center | Region Center VI | \$1,018,083 | \$5,769,134 | | | |
| Dr. Gilbert L. Porter ES | Region Center VI | \$984,840 | | | | \$1,496,661 |
| Oliver Hoover ES | Region Center VI | \$831,500 | | \$1,757,082 | \$7,028,330 | |
| Winston Park ES | Region Center VI | | \$350,000 | \$5,518,370 | | |

FIVE YEAR CAPITAL PLAN FOR FISCAL YEARS 2006-2010

| PROJECT | REGION | FY 06-07 | FY 07-08 | FY 08-09 | FY 09-10 | FY10-11 |
|---|------------------|----------------------|----------------------|----------------------|----------------------|---------------------|
| Whispering Pines ES | Region Center VI | | \$422,010 | | | |
| Pine Lake ES | Region Center VI | \$250,000 | \$158,733 | \$2,178,768 | | \$8,715,073 |
| Oliver Hoover ES - PLC U | Region Center VI | | | \$300,186 | | |
| Oliver Hoover ES | Region Center VI | \$831,500 | \$722,970 | \$1,757,082 | | |
| Naranja ES | Region Center VI | | \$1,312,228 | \$5,248,910 | | |
| Kendale Lakes ES | Region Center VI | | | | | \$700,000 |
| Gulfstream ES | Region Center VI | | \$125,000 | | | \$4,767,601 |
| Florida City ES | Region Center VI | | \$1,181,554 | \$4,726,216 | | |
| Cutler Ridge ES | Region Center VI | | | | | \$1,000,000 |
| Claude Pepper ES | Region Center VI | | \$250,000 | | | |
| Caribbean ES | Region Center VI | \$533,360 | | | | |
| Campbell Drive MS | Region Center VI | | | \$847,880 | | \$3,391,518 |
| Calusa ES | Region Center VI | \$257,736 | \$350,000 | | | |
| Bel-Aire ES | Region Center VI | | \$195,000 | | | |
| Avocado ES | Region Center VI | | \$125,000 | \$1,045,633 | | \$4,182,731 |
| Transportation Center | Transportation | \$18,654 | | \$220,000 | | |
| Transportation Center South | Transportation | \$60,290 | | \$185,798 | | |
| Transportation Center | Transportation | | \$71,000 | | | |
| Transportation Center | Transportation | | \$500,000 | | | |
| S & D Warehouse | V | \$373,225 | | | | |
| Transportation Center Adm. Offices | V | \$67,600 | | | | |
| Transportation Center Maintenance Vehicle | V | \$140,733 | | | | |
| South Dade Skill Ctr. | VI | \$225,000 | | | | |
| TOTAL | | \$222,209,888 | \$196,268,050 | \$250,062,028 | \$384,938,675 | \$89,348,798 |

The School Board of Miami-Dade County, Florida, adheres to a policy of nondiscrimination in employment and educational programs/activities and programs/activities receiving Federal financial assistance from the Department of Education, and strives affirmatively to provide equal opportunity for all as required by:

Title VI of the Civil Rights Act of 1964 - prohibits discrimination on the basis of race, color, religion, or national origin.

Title VII of the Civil Rights Act of 1964, as amended - prohibits discrimination in employment on the basis of race, color, religion, gender, or national origin.

Title IX of the Education Amendments of 1972 - prohibits discrimination on the basis of gender.

Age Discrimination in Employment Act of 1967 (ADEA), as amended - prohibits discrimination on the basis of age with respect to individuals who are at least 40.

The Equal Pay Act of 1963, as amended - prohibits sex discrimination in payment of wages to women and men performing substantially equal work in the same establishment.

Section 504 of the Rehabilitation Act of 1973 - prohibits discrimination against the disabled.

Americans with Disabilities Act of 1990 (ADA) - prohibits discrimination against individuals with disabilities in employment, public service, public accommodations and telecommunications.

The Family and Medical Leave Act of 1993 (FMLA) - requires covered employers to provide up to 12 weeks of unpaid, job-protected leave to "eligible" employees for certain family and medical reasons.

The Pregnancy Discrimination Act of 1978 - prohibits discrimination in employment on the basis of pregnancy, childbirth, or related medical conditions.

Florida Educational Equity Act (FEEA) - prohibits discrimination on the basis of race, gender, national origin, marital status, or handicap against a student or employee.

Florida Civil Rights Act of 1992 - secures for all individuals within the state freedom from discrimination because of race, color, religion, sex, national origin, age, handicap, or marital status.

School Board Rules 6Gx13- 4A-1.01, 6Gx13- 4A-1.32, and 6Gx13- 5D-1.10 - prohibit harassment and/or discrimination against a student or employee on the basis of gender, race, color, religion, ethnic or national origin, political beliefs, marital status, age, sexual orientation, social and family background, linguistic preference, pregnancy, or disability.

Veterans are provided re-employment rights in accordance with P.L. 93-508 (Federal Law) and Section 295.07 (Florida Statutes), which stipulate categorical preferences for employment.